

RESOLUTION 17-78

A RESOLUTION OF THE CITY OF PANAMA CITY BEACH, FLORIDA, APPROVING AN AGREEMENT WITH FLAGALA, INC. IN THE AMOUNT OF \$55,290 FOR THE FRANK BROWN PARK CONCRETE REPAIR.

BE IT RESOLVED that the appropriate officers of the City are authorized but not required to accept and deliver on behalf of the City that certain Agreement between the City and Flagala, Inc., relating to the Frank Brown Park concrete repair, in the basic amount of Fifty Five Thousand, Two Hundred Ninety Dollars (\$55,290), in substantially the form attached and presented to the Council today, with such changes, insertions or omissions as may be approved by the City Manager and whose execution shall be conclusive evidence of such approval.

THIS RESOLUTION shall be effective immediately upon passage.

PASSED in regular session this 13th day of April, 2017.

CITY OF PANAMA CITY BEACH

By: 
Mike Thomas, Mayor

ATTEST:


Diane Fowler, City Clerk

**CITY OF PANAMA CITY BEACH
BID TABULATION**

Bidder	Address	Information	Price
Flagala, Inc.	2020 Watkins Ave PCB, FL 32407 850-236-7000	Per Specs	\$55,290.00
Absolute Solutions ARS, LLC	PO Box 28325 PCB, FL 32411	Per Specs	\$66,067.97
BCL Civil Contractors	6608 Hwy 22 PC, FL 32404	Per Specs	\$90,968.00
Sikes Concrete	8030 Hwy 77 Southport, FL 32409	Per Specs	\$84,340.00

BID PROPOSAL FORM

TO: City of Panama City Beach, Florida

SUBMITTED: March 27, 2017.

Frank Brown Park Concrete Repair

The Undersigned, as Bidder, hereby declares that they have examined the bid specifications and informed themselves fully in regard to all conditions pertaining to the equipment to be supplied.

The Bidder proposes and agrees, if this proposal is accepted, to contract with the **City of Panama City Beach** for the lump sum prices listed, in full and complete accordance with the shown, noted, described and reasonably intended requirements of the specifications to the full and entire satisfaction of the City of Panama City Beach, Florida, with a definite understanding that no additional money will be allowed for any and all additions. Payment in full will be made to the supplier within 30 days of delivery. The Bidder further proposes and agrees hereby to complete the Frank Brown Park Concrete Repair by May 31, 2017.

Purchase will be made under terms and conditions specified by City in its form of Purchase Order. If a deposit is required, it must be specified below. Final payment, in readily available funds, will be made upon acceptance by City of strictly conforming goods after delivery. Strict adherence to design specifications is required.

ADDENDUM ACKNOWLEDGMENT: (Only if addendums have been provided).

I, the undersigned bidder, hereby acknowledge receipt of the following addenda:

Addendum No. _____ Addendum No. _____

LUMP SUM BID PRICE:

Lump sum price for Frank Brown Park Concrete Repair in accordance with the contract Specifications:

\$ 55,290.00

12 Month Warranty on Concrete Repair from cracks, flaking, sinking and other related issues caused from the pour.

I Agree Initial JDB

Specify terms of any deposit: None

SUPPLIER: Flagala, Inc.

BY: Joseph D. Bishop TITLE: VP., FRO

ADDRESS: 2020 Watkins Ave. CITY: PCB STATE: FL ZIP: 32407

EMAIL ADDRESS: Joseph@flagala.com PHONE: 850.236.7000

SIGNATURE – (Confirming all information above is correct) 

FRANK BROWN PARK CONCRETE REPAIR & IMPROVEMENTS

PANAMA CITY BEACH, FLORIDA

PREPARED FOR:
CITY OF PANAMA CITY BEACH



ADDRESS
110 S. ARNOLD ROAD
PANAMA CITY BEACH, FLORIDA 32413
PHONE: (850) 233.5100

MIKE THOMAS JOISIE STRANGE JOHN REICHARD PHIL CHESTER HECTOR SOLIS MARIO GISBERT JIM PONEK	MAYOR VICE MAYOR COUNCILMAN COUNCILMAN COUNCILMAN CITY MANAGER PARKS & RECREATION DIR.
--	--

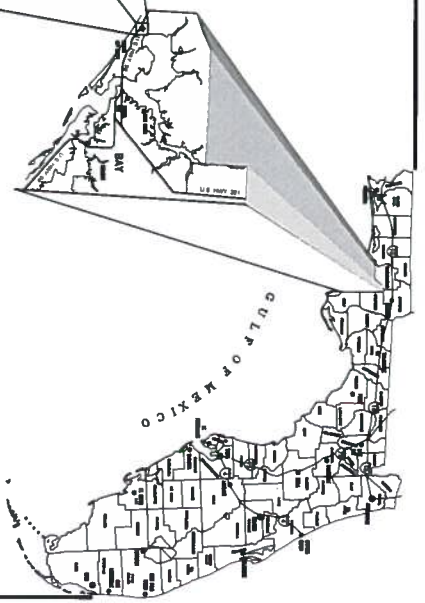
**PANHANDLE
ENGINEERING, INC.**

ENVIRONMENTAL ENGINEERS • CIVIL ENGINEERS • LAND PLANNERS
3005 South Highway 77 Lynn Haven, Florida 32444
(850) 783-5000 Fax (850) 789-0730 pe@panhandleengineering.com

PREPARED BY:



VICINITY MAP
NOT TO SCALE

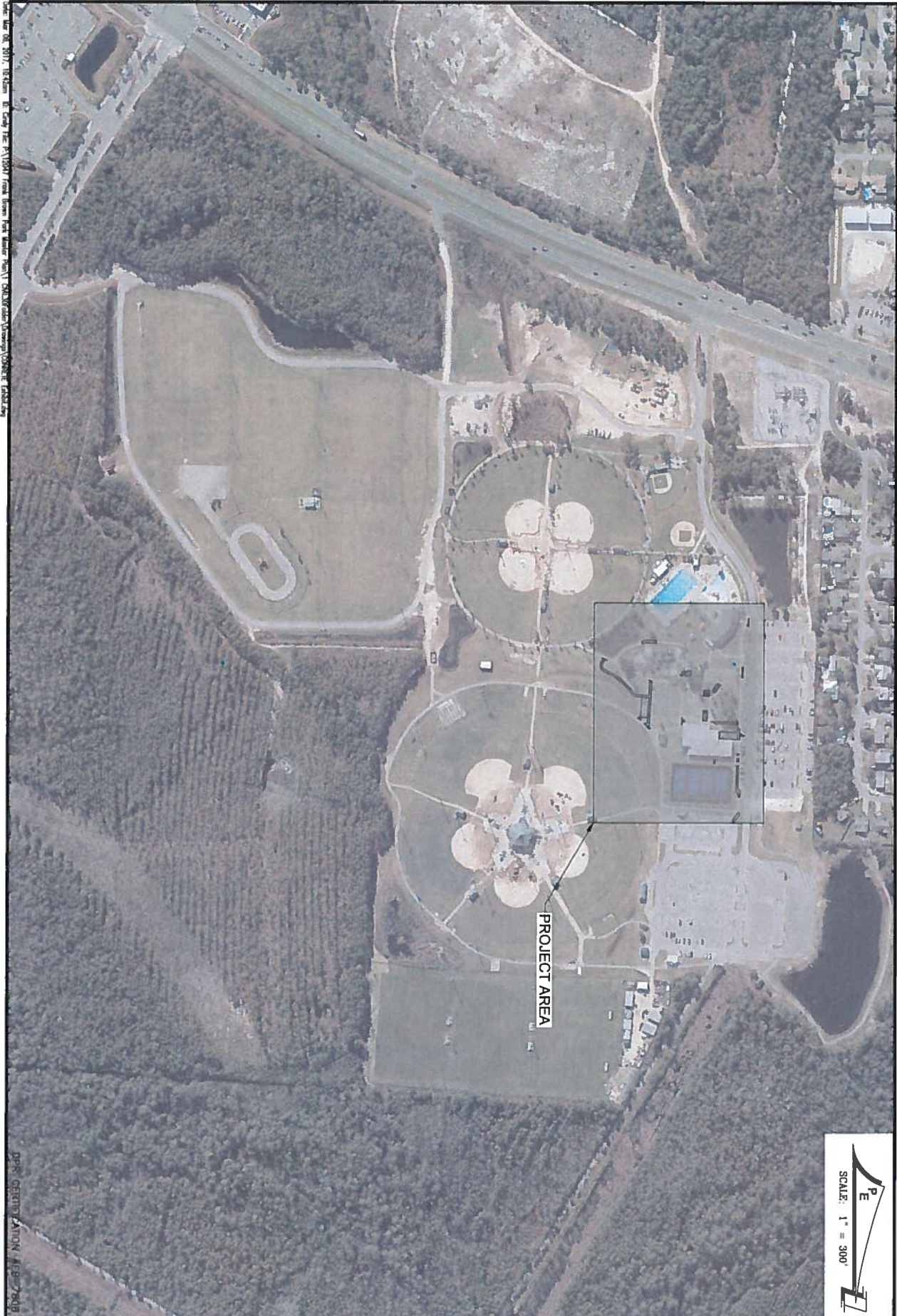


MARCH 2017
PROJECT #12047

DRAWING LIST

- 1 - OVERALL SITE PLAN
- 2 - PROJECT AREA
- 3 - AREA 1
- 4 - AREA 2
- 5 - AREA 3
- 6 - AREA 4
- 7 - CONSTRUCTION DETAILS

FOR SCALE VERIFICATION AFTER DUPLICATION, THIS LINE SHOULD BE 1" LONG



DATE: MAR 08, 2017 10:52am BY: CAK FILE: P:\15547\Frank Brown Park\CONCRETE\CONCRETE Exhibit.dwg

DATE: MARCH 2017

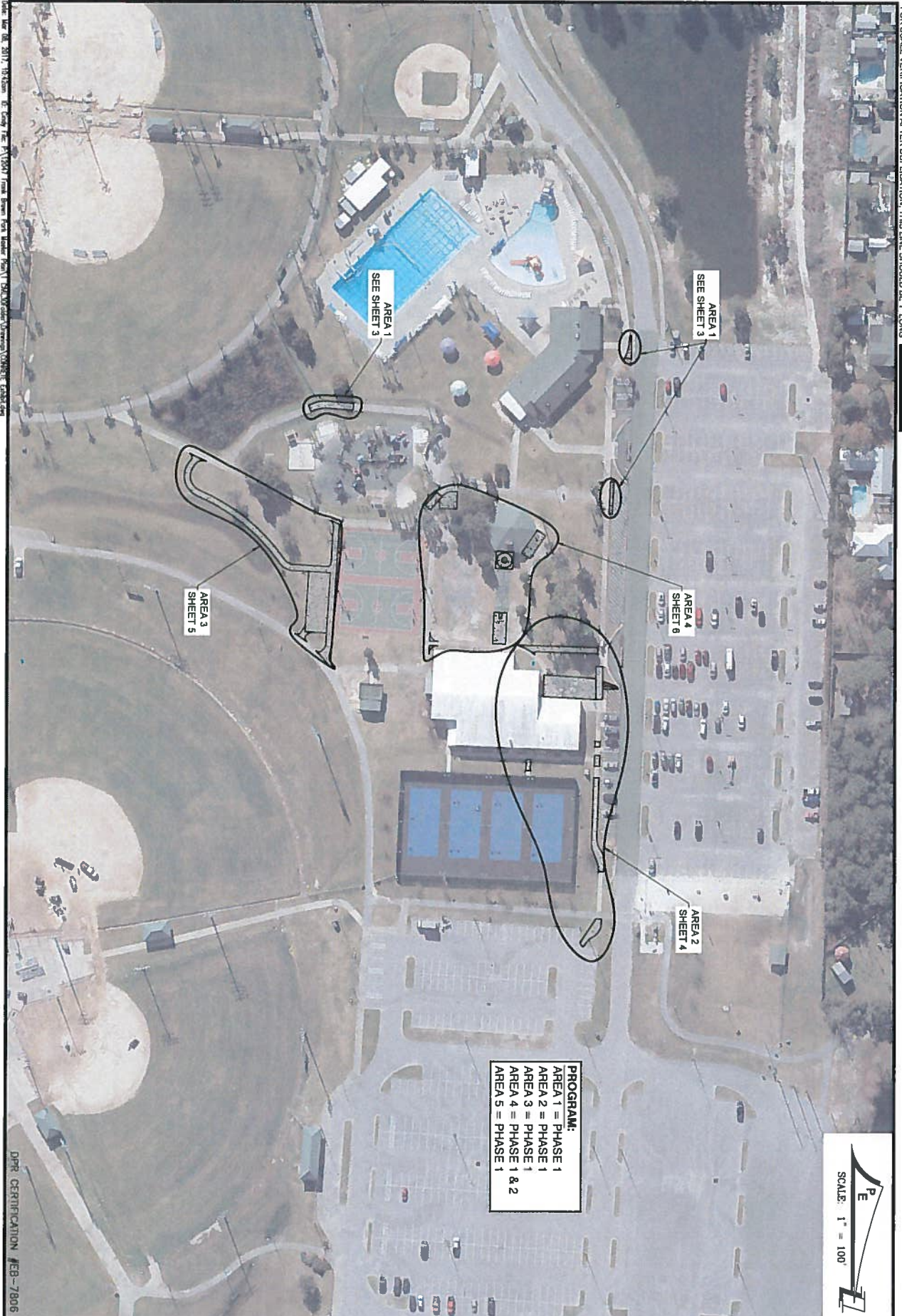


1

OVERALL SITE PLAN
FRANK BROWN PARK
CONCRETE REPAIR & IMPROVEMENTS
PANAMA CITY BEACH, FLORIDA

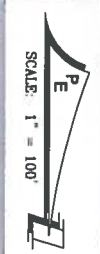
PANHANDLE ENGINEERING, INC.
ENVIRONMENTAL ENGINEERS • CIVIL ENGINEERS • LAND PLANNERS
3305 South Highway 77 Lynn Haven, Florida 32444
(850) 63-5206 Fax (850) 63-6738 pe@panhandleengineering.com

CAD FILE: CONCRETE Exhibit.dwg
DWN BY: cak
DATE: MARCH 2017
SHEET NO: 1
PROJECT NUMBER 12047



DATE: MAR 08, 2017 10:35am BY: CAK FILE: P:\2017\Frank Brown Park Master Plan\1. Site Work\Concrete\CONCRETE_SHEET.dwg

DPR CERTIFICATION #EB-7806



PROGRAM:
 AREA 1 = PHASE 1
 AREA 2 = PHASE 1
 AREA 3 = PHASE 1
 AREA 4 = PHASE 1 & 2
 AREA 5 = PHASE 1

2	PROJECT AREA	<p>PANHANDLE ENGINEERING, INC. ENVIRONMENTAL ENGINEERS • CIVIL ENGINEERS • LAND PLANNERS 3005 South Highway 77 Lynn Haven, Florida 32444 (850)763-5209 Fax: (850)763-6738 pe@panhandleengineering.com</p>	CAD FILE: CONCRETE Exhibit
	FRANK BROWN PARK		OWN By: cak
	CONCRETE REPAIR & IMPROVEMENTS		DATE: MARCH 2017
	PANAMA CITY BEACH, FLORIDA		SHEET NO: 2
			PROJECT NUMBER 12047

FOR SCALE VERIFICATION AFTER DUPLICATION, THIS LINE SHOULD BE 1" LONG



DATE: MAR 08, 2017 10:34am DE: CAK BY: CAK FILE: P:\13087 Frank Brown Park Area\13087.dwg

DPR CERTIFICATION #EB-7906

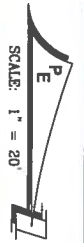
3

AREA 1
FRANK BROWN PARK
CONCRETE REPAIR & IMPROVEMENTS
 PANAMA CITY BEACH, FLORIDA

PANHANDLE ENGINEERING, INC.
 ENVIRONMENTAL ENGINEERS • CIVIL ENGINEERS • LAND PLANNERS
 3005 South Highway 77 Lynn Haven, Florida 32444
 (850)763-5208 Fax (850)763-6738 pe@panhandleengineering.com

CAD FILE: CONCRETE Exhibit
DWN BY: cak
DATE: MARCH 2017
SHEET NO: 3
PROJECT NUMBER 12047

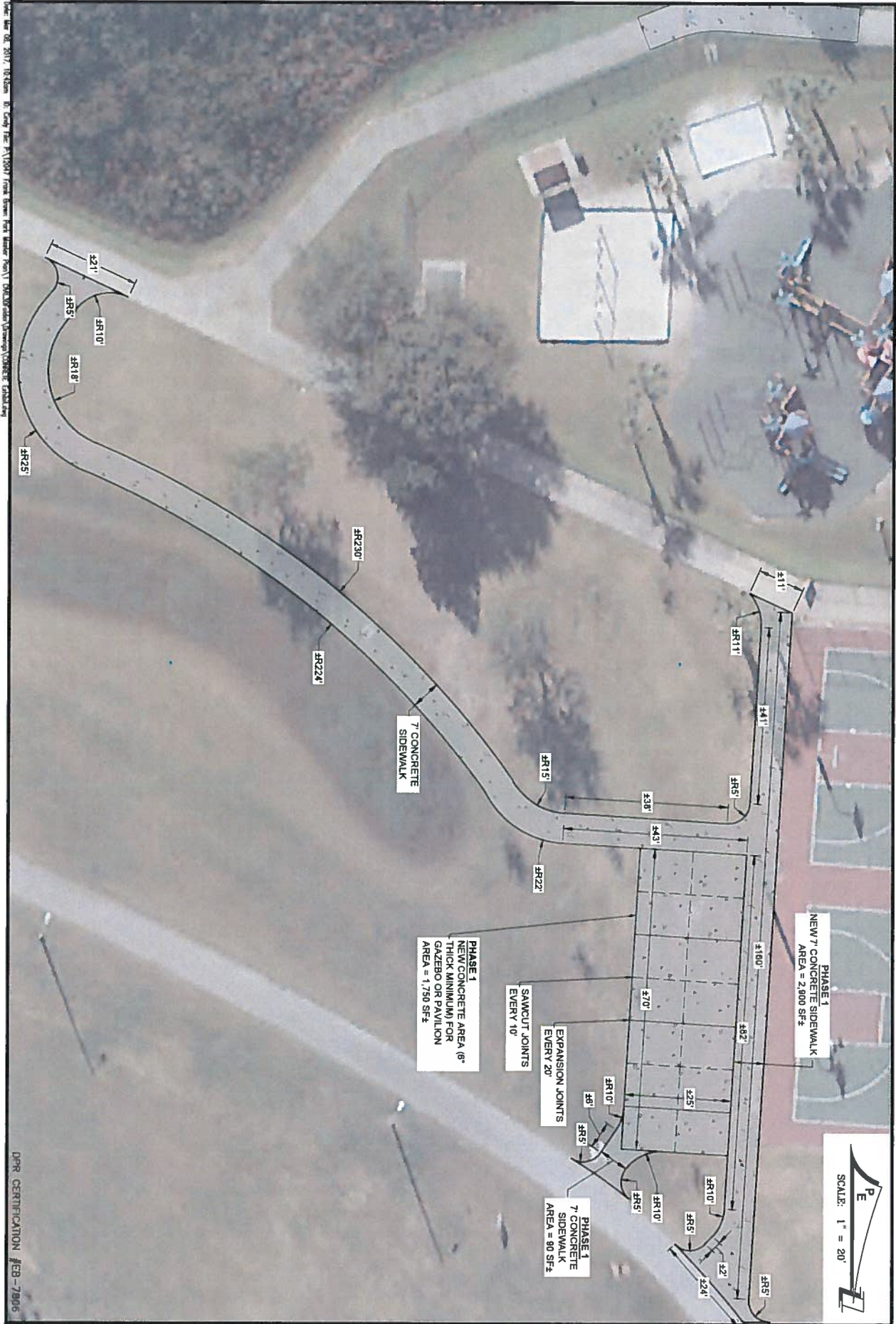
FOR SCALE VERIFICATION AFTER DUPLICATION, THIS LINE SHOULD BE 1' LONG



DATE: MAR 06, 2017 10:58am Dr. Cindy Lee P:\10247 Frank Brown Park Master Plan\10247 Master Plan\Concrete\Area 2.dwg

4	<p>AREA 2 FRANK BROWN PARK CONCRETE REPAIR & IMPROVEMENTS PANAMA CITY BEACH, FLORIDA</p>	<p>PANHANDLE ENGINEERING, INC. <small>ENVIRONMENTAL ENGINEERS • CIVIL ENGINEERS • LAND PLANNERS</small> 3005 South Highway 77 Lynn Haven, Florida 32444 (850)763-5200 Fax (850)763-0730 pe@panhandleengineering.com</p>	<p>CAD FILE: CONCRETE Exhibit.dwg DWN BY: csk DATE: MARCH 2017 SHEET NO: 4 PROJECT NUMBER 12047</p>
---	--	--	--

FOR SCALE VERIFICATION AFTER DUPLICATION, THIS LINE SHOULD BE 1' LONG

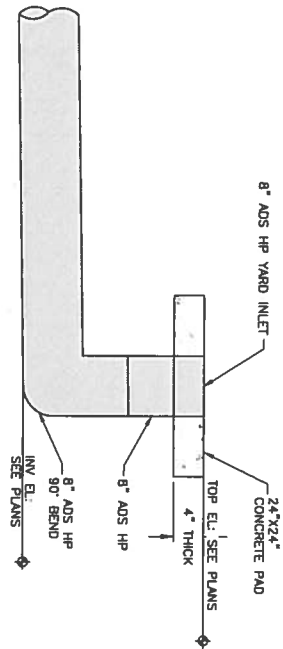


DATE: MAR 08, 2017 10:42am DE: CAD FILE: P:\13047 Frank Brown Park\04-CONCRETE\CONCRETE Exhibit.dwg

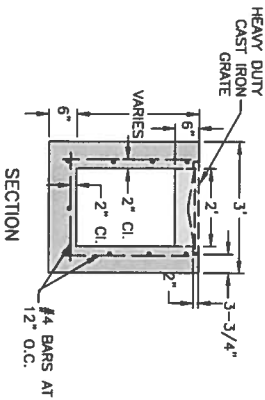
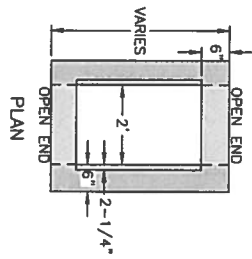
DRP CERTIFICATION #EB-7906



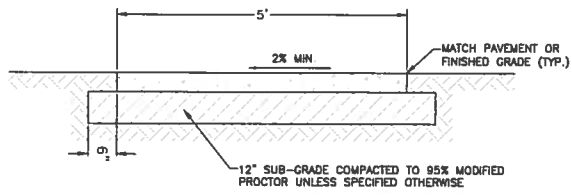
5	AREA 3 FRANK BROWN PARK CONCRETE REPAIR & IMPROVEMENTS PANAMA CITY BEACH, FLORIDA	PANHANDLE ENGINEERING, INC. <small>ENVIRONMENTAL ENGINEERS • CIVIL ENGINEERS • LAND PLANNERS</small> 3005 South Highway 77 Lynn Haven, Florida 32444 (850)765-5200 Fax (850)765-6738 pe@panhandleengineering.com	CAD FILE: CONCRETE Exhibit.dwg DWN BY: cak DATE: MARCH 2017 SHEET NO: 5 PROJECT NUMBER 12047
	<small>© PANHANDLE ENGINEERING, INC. ALL RIGHTS RESERVED. NO PART OF THIS DOCUMENT MAY BE REPRODUCED OR UTILIZED IN ANY FORM WITHOUT PRIOR WRITTEN AUTHORIZATION OF PANHANDLE ENGINEERING, INC.</small>		



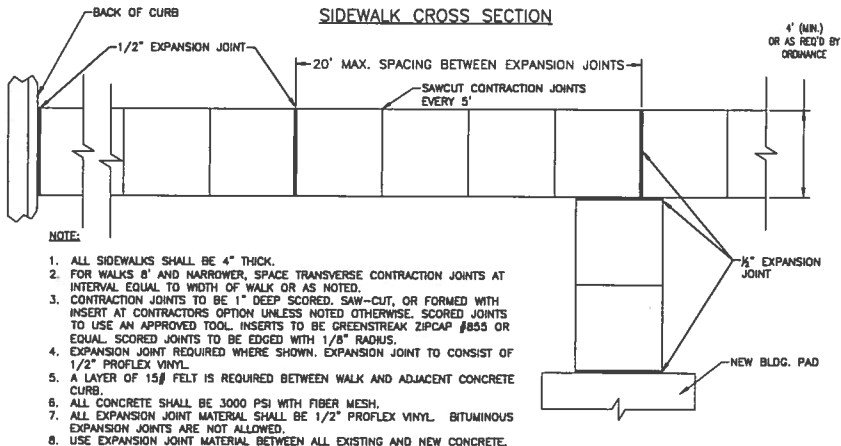
8" ADS YARD DRAIN DETAIL
NOT TO SCALE



TYPICAL TRENCH DRAIN DETAIL
NOT TO SCALE



SIDEWALK CROSS SECTION



NOTE:

1. ALL SIDEWALKS SHALL BE 4" THICK.
2. FOR WALKS 8" AND NARROWER, SPACE TRANSVERSE CONTRACTION JOINTS AT INTERVAL EQUAL TO WIDTH OF WALK OR AS NOTED.
3. CONTRACTION JOINTS TO BE 1" DEEP SCORED, SAW-CUT, OR FORMED WITH INSERT AT CONTRACTOR'S OPTION UNLESS NOTED OTHERWISE. SCORED JOINTS TO USE AN APPROVED TOOL, INSERTS TO BE GREENSTREAK ZIPCAP #855 OR EQUAL SCORED JOINTS TO BE EDGED WITH 1/8" RADIUS.
4. EXPANSION JOINT REQUIRED WHERE SHOWN. EXPANSION JOINT TO CONSIST OF 1/2" PROFLEX VINYL.
5. A LAYER OF 15# FELT IS REQUIRED BETWEEN WALK AND ADJACENT CONCRETE CURB.
6. ALL CONCRETE SHALL BE 3000 PSI WITH FIBER MESH.
7. ALL EXPANSION JOINT MATERIAL SHALL BE 1/2" PROFLEX VINYL. BITUMINOUS EXPANSION JOINTS ARE NOT ALLOWED.
8. USE EXPANSION JOINT MATERIAL BETWEEN ALL EXISTING AND NEW CONCRETE.

NOTES:
ALL CONCRETE SHALL BE 3000 PSI WITH FIBER MESH.

CITY OF P.C.B. UTILITIES DEPARTMENT		DATE: MAR 12	
DATE OF APPROVAL:		DATE OF APPROVAL:	
STANDARD JOINT LAYOUT FOR CONCRETE WALKS		M-12	

Date: Mar 01, 2017 10:33am To: Casey Lee P:\2017\Frank Brown Park\Bldg\Concrete\CAD.dwg

DRP CERTIFICATION #EB-7806



CITY OF PANAMA CITY BEACH AGENDA ITEM SUMMARY

1. DEPARTMENT MAKING REQUEST/NAME:

Parks and Recreation

2. MEETING DATE:

April 13, 2017

3. REQUESTED MOTION/ACTION:

Staff's recommendation is to approve the most responsive bid for the Frank Brown Park Concrete Repair from Flagala Inc. in the amount of \$55,290.00.

4. AGENDA

PRESENTATION
PUBLIC HEARING
CONSENT
REGULAR

5. IS THIS ITEM BUDGETED (IF APPLICABLE)? YES NO N/A
BUDGET AMENDMENT OR N/A

DETAILED BUDGET AMENDMENT ATTACHED YES NO N/A

6. BACKGROUND: (WHY IS THE ACTION NECESSARY, WHAT GOAL WILL BE ACHIEVED)

On March 28, 2017, Staff received four (4) sealed bids for the Frank Brown Park Concrete Repair. Out of the four (4) responsive bids, Flagala, Inc. was the lowest responsive bid in the amount of \$55,290.00. Please see attachment A.

The repairs of concrete and the additions of sidewalk areas can be found on attachment B.

This purchase has been budgeted in the adopted 2016-2017 Budget.

The City Attorney, City Manager and Finance Director have reviewed and approve the recommendation to award Flagala, Inc. the Frank Brown Park Concrete Repair bid in the amount of \$55,290.00.