

# **SPECIFICATIONS**

## **Frank Brown Park Concrete Repair**

**CITY OF PANAMA CITY BEACH, FLORIDA**

**March 9, 2017**

## **NOTICE TO RECEIVE SEALED BIDS**

### **Frank Brown Park Concrete Repair**

The City of Panama City Beach hereby solicits sealed bids for Frank Brown Park Concrete Repair.

Sealed bids will be received until 2:00PM Central Time, March 28, 2017 at the City of Panama City Beach City Hall Annex, 110 S Arnold Road, Panama City Beach, Florida 32413 and will be opened and publicly read immediately thereafter. All Bids shall be submitted in an envelope clearly marked "Sealed Bid- Panama City Beach – **Frank Brown Park Concrete Repair**".

Copies of the specifications may be obtained from the Parks & Recreation Office at 16200 PCB Parkway or on the City's Website at [www.pcbgov.com](http://www.pcbgov.com). The point of contact for obtaining specifications is Cheryl Joyner, email address [cjoyner@pcbgov.com](mailto:cjoyner@pcbgov.com). No specifications will be issued to suppliers later than seventy-two (72) hours prior to the time indicated above for receiving bids.

Bids must be submitted upon the standard form contained in the Specifications.

The City reserves the right to reject any and all bids and to waive any informality in bids received. All bidders shall comply with all applicable state and local laws concerning licensing, registration, and regulations of businesses in the state of Florida.

All Bids shall be firm for a period of 60 days after opening.

## **BID PROPOSAL FORM**

TO: City of Panama City Beach, Florida

SUBMITTED: \_\_\_\_\_, 2017.

### **Frank Brown Park Concrete Repair**

The Undersigned, as Bidder, hereby declares that they have examined the bid specifications and informed themselves fully in regard to all conditions pertaining to the equipment to be supplied.

The Bidder proposes and agrees, if this proposal is accepted, to contract with the **City of Panama City Beach** for the lump sum prices listed, in full and complete accordance with the shown, noted, described and reasonably intended requirements of the specifications to the full and entire satisfaction of the City of Panama City Beach, Florida, with a definite understanding that no additional money will be allowed for any and all additions. Payment in full will be made to the supplier within 30 days of delivery. The Bidder further proposes and agrees hereby to complete the Frank Brown Park Concrete Repair by May 31, 2017.

Purchase will be made under terms and conditions specified by City in its form of Purchase Order. If a deposit is required, it must be specified below. Final payment, in readily available funds, will be made upon acceptance by City of strictly conforming goods after delivery. Strict adherence to design specifications is required.

**ADDENDUM ACKNOWLEDGMENT:** (Only if addendums have been provided).

I, the undersigned bidder, hereby acknowledge receipt of the following addenda:

Addendum No. \_\_\_\_\_ Addendum No. \_\_\_\_\_

**LUMP SUM BID PRICE:**

Lump sum price for Frank Brown Park Concrete Repair in accordance with the contract Specifications:

\$ \_\_\_\_\_

12 Month Warranty on Concrete Repair from cracks, flaking, sinking and other related issues caused from the pour.

I Agree Initial \_\_\_\_\_

Specify terms of any deposit: \_\_\_\_\_

**SUPPLIER:** \_\_\_\_\_

**BY:** \_\_\_\_\_ **TITLE:** \_\_\_\_\_

**ADDRESS:** \_\_\_\_\_ **CITY:** \_\_\_\_\_ **STATE:** \_\_\_\_\_ **ZIP:** \_\_\_\_\_

**EMAIL ADDRESS:** \_\_\_\_\_ **PHONE:** \_\_\_\_\_

**SIGNATURE – (Confirming all information above is correct)** \_\_\_\_\_

# Frank Brown Park Concrete Repair

## PART 1 -GENERAL SPECIFICATIONS

### General:

- a. Frank Brown Park Concrete Repair must be completed by May 31, 2017.
- b. There must be a 12 month warranty on Concrete Repair from cracks, flaking, sinking and other related issues caused from the pour.
- c. All sidewalks shall be 4" Thick.
- d. For sidewalks 8' and narrower, space transverse contraction joint at interval equal to width of walk or as noted.
- e. Contraction joints to be 1" deep scored. Saw-Cut, or framed with insert at contractors option unless noted otherwise. Scored Joints to use an approved tool. Inserts to be Greenstreak ZIPCAP #855 or equal. Scored joints to be edged with 1/8" Radius.
- f. A 12" sub-grade compacted to 95% modified proctor unless specified otherwise.
- g. Expansion joint required where shown. Expansion joint to consist of 1/2" profile vinyl.
- h. A layer of 15# felt is required between walkway and adjacent concrete curb.
- i. All concrete shall be 3000 psi with fiber mesh.
- j. All expansion joint material shall be 1/2" proflex vinyl. Bituminous expansion joints are not allowed.
- k. Use expansion joint material between all existing and new concrete.
- l. The City is tax exempt and a copy of certificate of exemption is attached as (Exhibit A)
- m. The plan, description, square footage & locations of concrete repairs are attached (Exhibit B)

### 1.1 Additional Requirements:

- a. Site work demolition and prep work will be the responsibility of the bidder.
- b. The City will provide a large roll off in the Bus Drop Off Area in front of large pavilion.
- c. Under Construction Signs and closing off work areas is the responsibility of the bidder.
- d. The concrete addition to the shuffleboard courts on both ends will have poles installed directly into the concrete pour. Poles will be provided by the Parks staff. Poles will be installed into pour by the bidder.

### 2.1 Dates:

- a. Job Walk is scheduled for Friday March 24<sup>th</sup> 10:00am at Frank Brown Park
- b. Sealed Bids Due Tuesday March 28, 2017 at 2:00pm at City Hall
- c. City Council Approval April 13, 2017
- d. Job awarded April 17, 2017
- e. Job to be completed by May 31, 2017.

### EXHIBIT A

Certificate of Tax Exemption

### EXHIBIT B

Plans of Frank Brown Park Concrete Repair



## Consumer's Certificate of Exemption

DR-14  
R. 04/11

Issued Pursuant to Chapter 212, Florida Statutes

85-8012646470C-9	05/31/2012	05/31/2017	MUNICIPAL GOVERNMENT
Certificate Number	Effective Date	Expiration Date	Municipal Government

This certifies that

CITY OF PANAMA CITY BEACH  
110 S HIGHWAY 79  
PANAMA CITY FL 32413-2140



is exempt from the payment of Florida sales and use tax on real property rented, transient rental property rented, tangible personal property purchased or rented, or services purchased.



## Important Information for Exempt Organizations

DR-14  
R. 04/11

1. You must provide all vendors and suppliers with an exemption certificate before making tax-exempt purchases. See Rule 12A-1.038, Florida Administrative Code (F.A.C.).
2. Your *Consumer's Certificate of Exemption* is to be used solely by your organization for your organization's customary nonprofit activities.
3. Purchases made by an individual on behalf of the organization are taxable, even if the individual will be reimbursed by the organization.
4. This exemption applies only to purchases your organization makes. The sale or lease to others of tangible personal property, sleeping accommodations, or other real property is taxable. Your organization must register, and collect and remit sales and use tax on such taxable transactions. Note: Churches are exempt from this requirement except when they are the lessor of real property (Rule 12A-1.070, F.A.C.).
5. It is a criminal offense to fraudulently present this certificate to evade the payment of sales tax. Under no circumstances should this certificate be used for the personal benefit of any individual. Violators will be liable for payment of the sales tax plus a penalty of 200% of the tax, and may be subject to conviction of a third-degree felony. Any violation will require the revocation of this certificate.
6. If you have questions regarding your exemption certificate, please contact the Exemption Unit of Account Management at 800-352-3671. From the available options, select "Registration of Taxes," then "Registration Information," and finally "Exemption Certificates and Nonprofit Entities." The mailing address is PO Box 6480, Tallahassee, FL 32314-6480.

# FRANK BROWN PARK CONCRETE REPAIR & IMPROVEMENTS

## PANAMA CITY BEACH, FLORIDA

PREPARED FOR:  
CITY OF PANAMA CITY BEACH



ADDRESS  
110 S. ARNOLD ROAD  
PANAMA CITY BEACH, FLORIDA 32413  
PHONE: (850) 233.5100

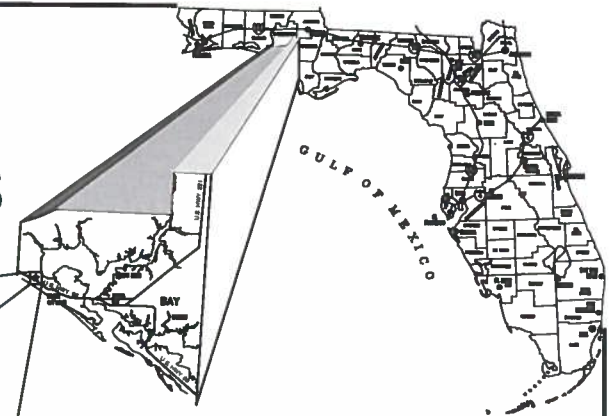
MIKE THOMAS  
JOSIE STRANGE  
JOHN REICHARD  
PHIL CHESTER  
HECTOR SOLIS  
MARIO GISBERT  
JIM PONEK

MAYOR  
VICE MAYOR  
COUNCILMAN  
COUNCILMAN  
COUNCILMAN  
CITY MANAGER  
PARKS & RECREATION DIR.



IMAGE SOURCE FROM  
LAT = 30°15'00"  
LON = -81°00'00"

VICINITY MAP  
NOT TO SCALE



MARCH 2017  
PROJECT #12047

### DRAWING LIST

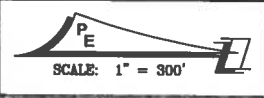
- 1 - OVERALL SITE PLAN
- 2 - PROJECT AREA
- 3 - AREA 1
- 4 - AREA 2
- 5 - AREA 3
- 6 - AREA 4
- 7 - CONSTRUCTION DETAILS

PREPARED BY:

**PANHANDLE  
ENGINEERING, INC.**

ENVIRONMENTAL ENGINEERS • CIVIL ENGINEERS LAND PLANNERS  
3005 South Highway 77 Lynn Haven, Florida 32444  
(850)763-5200 Fax (850)769-0730 pe@panhandleengineering.com

FOR SCALE VERIFICATION AFTER DUPLICATION, THIS LINE SHOULD BE 1" LONG



CAD FILE: CONCRETE BRINK
DWN BY: CRK
DATE: MARCH 2017
SHEET NO: 1
PROJECT NUMBER 12047

**PANHANDLE ENGINEERING, INC.**  
 ENVIRONMENTAL ENGINEERS • CIVIL ENGINEERS • LAND PLANNERS  
 3005 South Highway 77 Lynn Haven, Florida 32444  
 (850) 853-0200 Fax (850) 853-0201 p@panhandleengineering.com

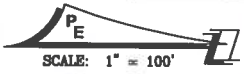
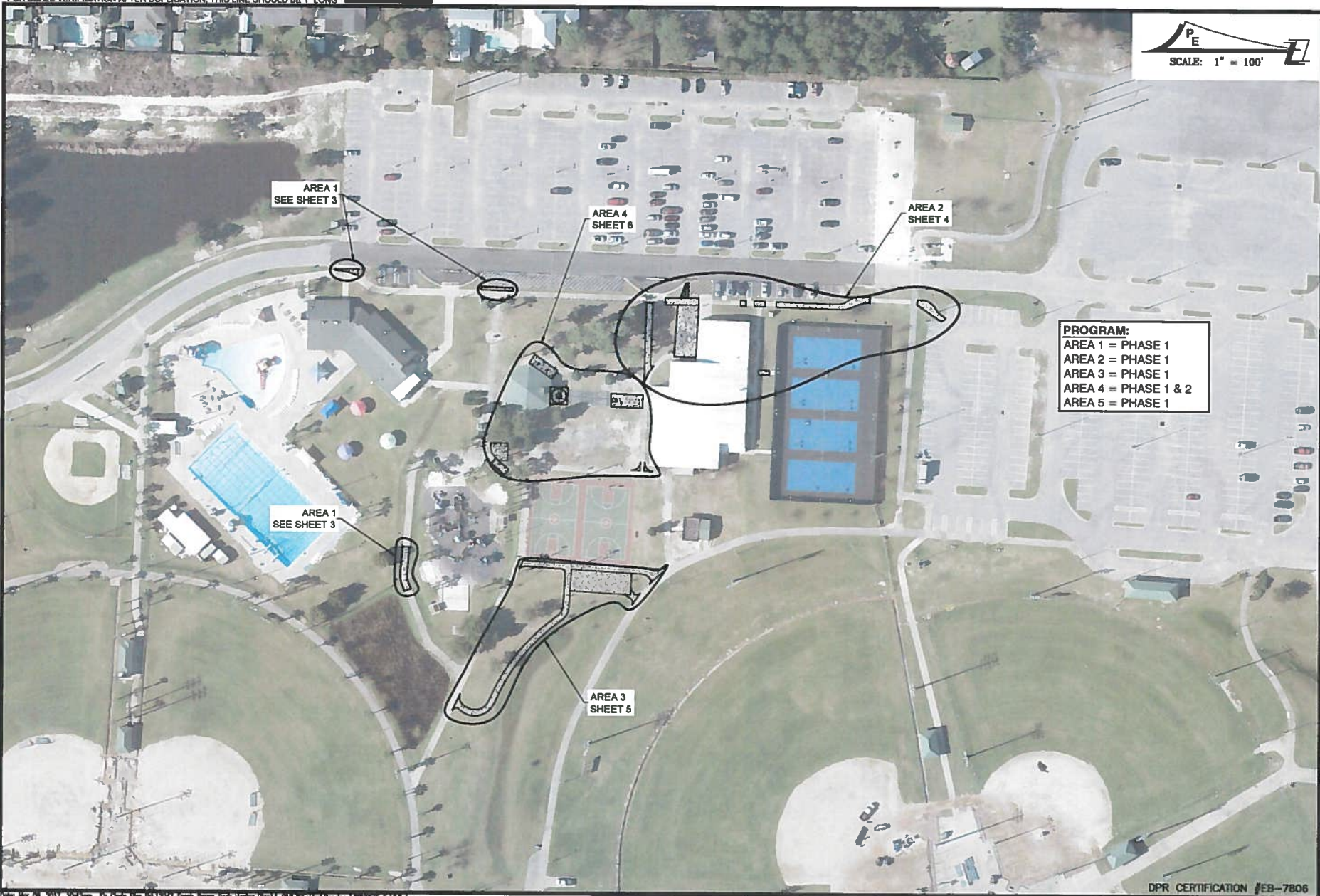
**OVERALL SITE PLAN**  
**FRANK BROWN PARK**  
**CONCRETE REPAIR & IMPROVEMENTS**  
 PANAMA CITY BEACH, FLORIDA

1

© PANHANDLE ENGINEERING, INC. ALL RIGHTS RESERVED. NO PART OF THIS DOCUMENT MAY BE REPRODUCED OR UTILIZED IN ANY FORM WITHOUT PRIOR WRITTEN AUTHORIZATION OF PANHANDLE ENGINEERING, INC.



FOR SCALE VERIFICATION AFTER DUPLICATION, THIS LINE SHOULD BE 1" LONG



AREA 1  
SEE SHEET 3

AREA 4  
SHEET 6

AREA 2  
SHEET 4

AREA 1  
SEE SHEET 3

AREA 3  
SHEET 5

**PROGRAM:**  
 AREA 1 = PHASE 1  
 AREA 2 = PHASE 1  
 AREA 3 = PHASE 1  
 AREA 4 = PHASE 1 & 2  
 AREA 5 = PHASE 1

CAD FILE: CONCRETE IMPROV.DWG  
 DWN BY: csk  
 DATE: MARCH 2017  
 SHEET NO.: 2  
 PROJECT NUMBER  
 12047

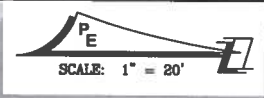
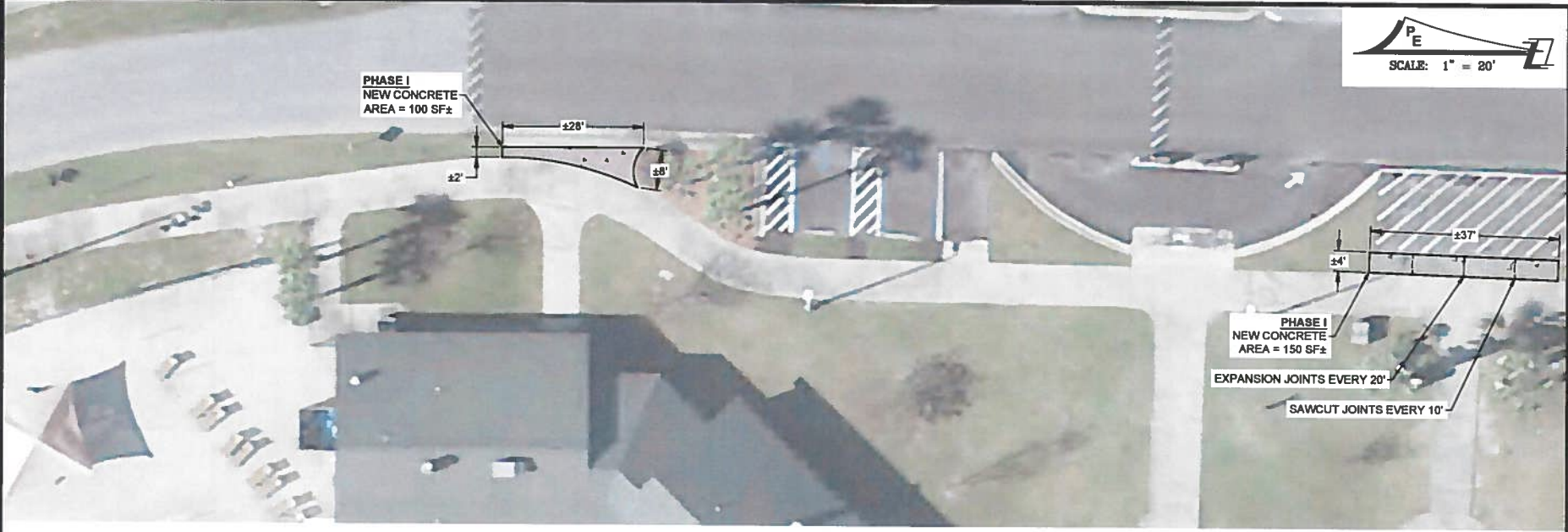
**PANHANDLE ENGINEERING, INC.**  
 ENVIRONMENTAL ENGINEERS • CIVIL ENGINEERS • LAND PLANNERS  
 8008 South Highway 77, Lynn Haven, Florida 32444  
 (813) 992-2828    info@panhandleeng.com

**PROJECT AREA**  
 FRANK BROWN PARK  
 CONCRETE REPAIR & IMPROVEMENTS  
 PANAMA CITY BEACH, FLORIDA

2



FOR SCALE VERIFICATION AFTER DUPLICATION, THIS LINE SHOULD BE 1" LONG



CAD FILE: CONCRETE IMPROV.DWG  
 DWN BY: GJK  
 DATE: MARCH 2017  
 SHEET NO: 3  
 PROJECT NUMBER  
 12047

**PANHANDLE ENGINEERING, INC.**  
 ENVIRONMENTAL ENGINEERS & LAND PLANNERS  
 3005 South Highway 77 Lynn Haven, Florida 33444  
 (850) 935-0001 Fax: (850) 935-0002 pge@panhandleengineering.com

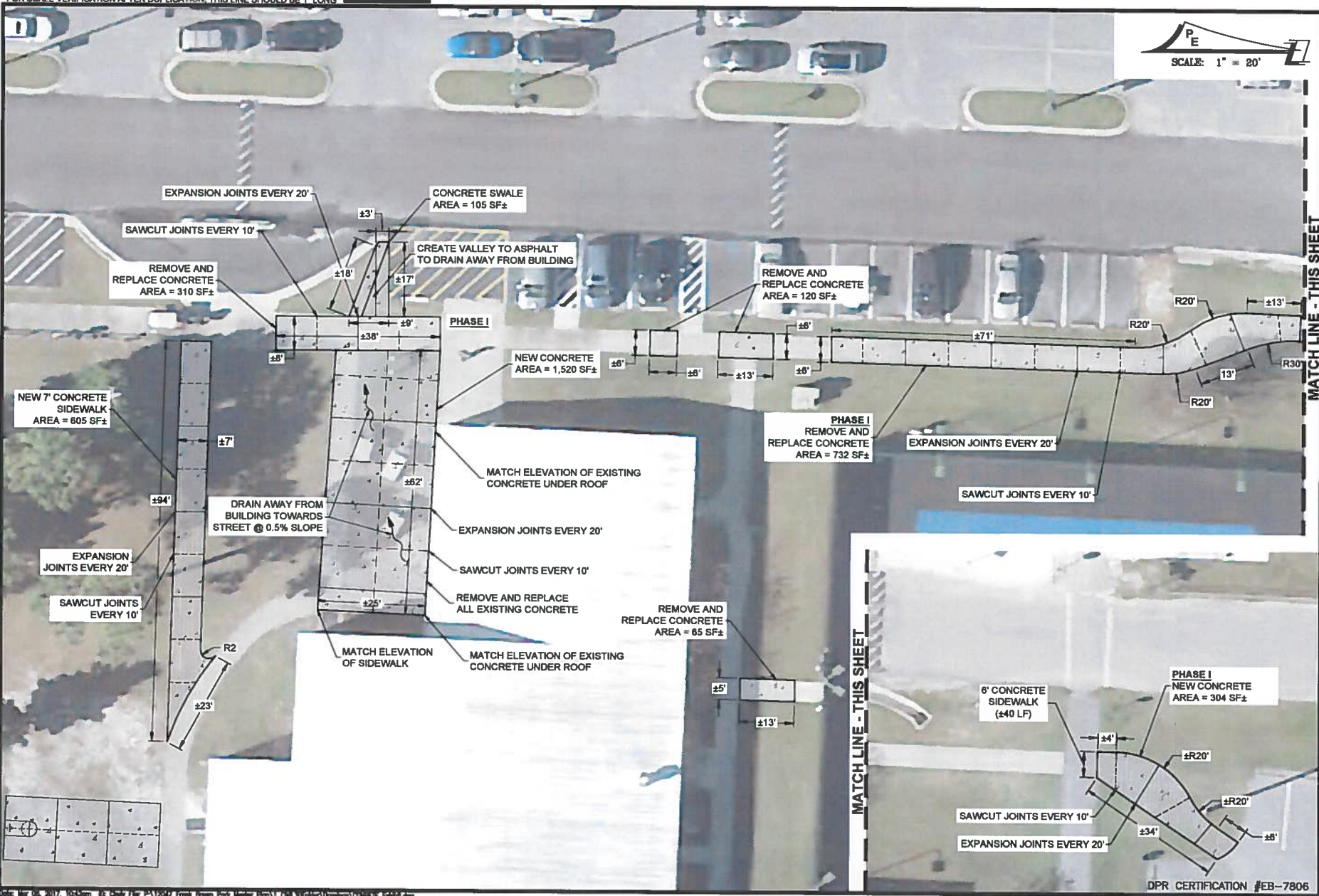
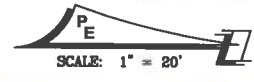
**AREA 1**  
**FRANK BROWN PARK**  
**CONCRETE REPAIR & IMPROVEMENTS**  
 PANAMA CITY BEACH, FLORIDA

Mar 04, 2017, 10:05am ES: C:\p1\12047 Frank Brown Park Master Plan\1 DWG\2017\Drawings\CONCRETE IMPROV.DWG

© PANHANDLE ENGINEERING, INC. ALL RIGHTS RESERVED. NO PART OF THIS DOCUMENT MAY BE REPRODUCED OR UTILIZED IN ANY FORM WITHOUT PRIOR WRITTEN AUTHORIZATION OF PANHANDLE ENGINEERING, INC.



FOR SCALE VERIFICATION AFTER DUPLICATION, THIS LINE SHOULD BE 1" LONG



CAD FILE: CONCRETE IMPROV.DWG
DWN BY: csk
DATE: MARCH 2017
SHEET NO: 4
PROJECT NUMBER: 12047

**PANHANDLE ENGINEERING, INC.**  
 ENVIRONMENTAL ENGINEERS • CIVIL ENGINEERS • LAND PLANNERS  
 3005 South Highway 77 Lynn Haven, Florida 32444  
 (850) 850-0000 fax (850) 850-0020 pengine@panhandleengineering.com

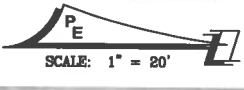
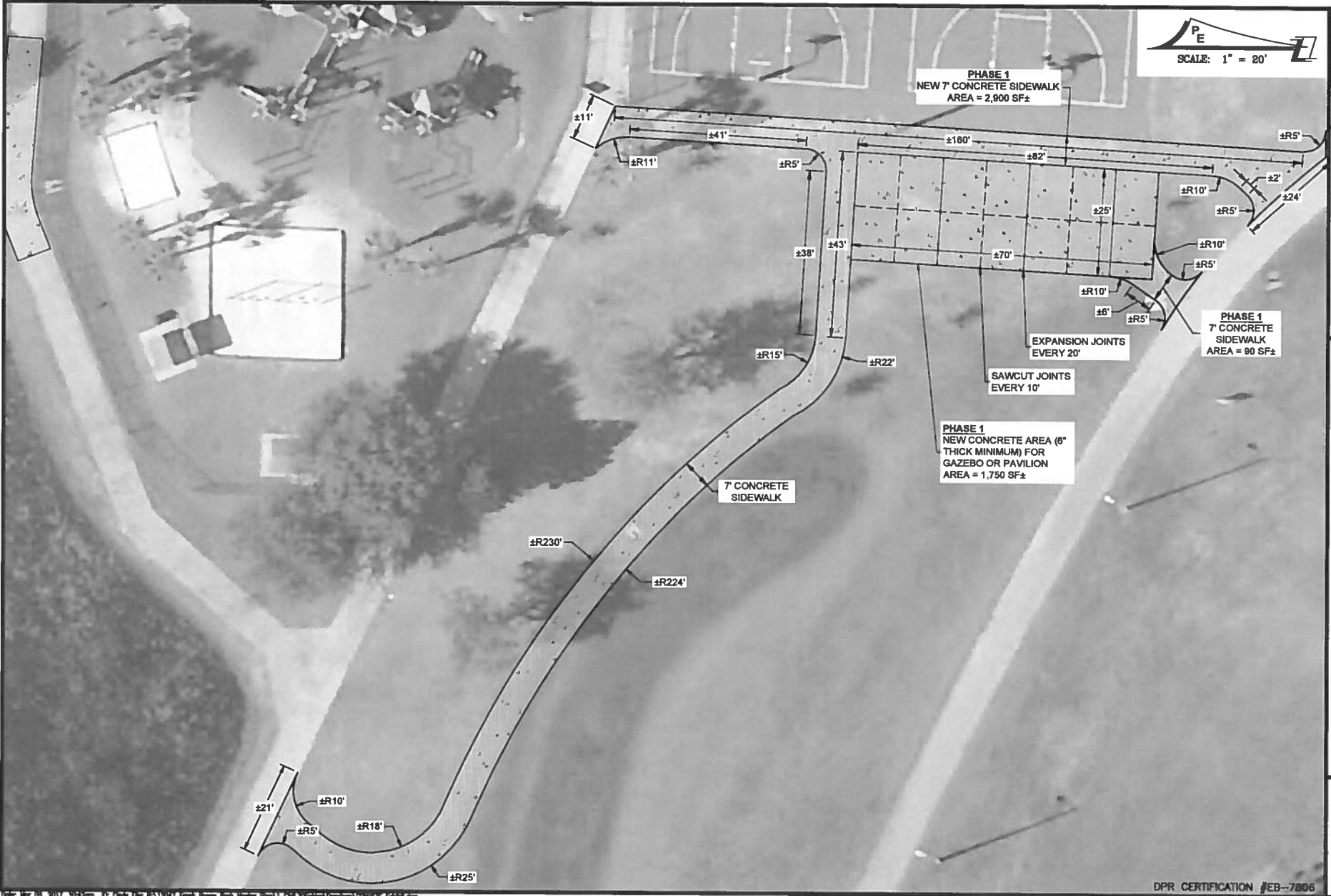
**AREA 2**  
**FRANK BROWN PARK**  
**CONCRETE REPAIR & IMPROVEMENTS**  
 PANAMA CITY BEACH, FLORIDA

**4**

Date: Mar 04, 2017, 10:25am File: C:\p1\12047 Frank Brown Park Master Plan\1\DWG\304\Area 2\Improv\CONCRETE IMPROV.DWG

© PANHANDLE ENGINEERING, INC. ALL RIGHTS RESERVED. NO PART OF THIS DOCUMENT MAY BE REPRODUCED OR UTILIZED IN ANY FORM WITHOUT PRIOR WRITTEN AUTHORIZATION OF PANHANDLE ENGINEERING, INC.

FOR SCALE VERIFICATION AFTER DUPLICATION, THIS LINE SHOULD BE 1" LONG



CAD FILE: CONCRETE IMPROV.DWG  
 DWN BY: csk  
 DATE: MARCH 2017  
 SHEET NO: 5  
 PROJECT NUMBER  
 12047

**PANHANDLE ENGINEERING, INC.**  
 ENVIRONMENTAL ENGINEERS & CIVIL ENGINEERS & LAND PLANNERS  
 3006 South Highway 77 Lynn Haven, Florida 32444  
 (850) 884-2626 panhandleengineering.com

**AREA 3**  
**FRANK BROWN PARK**  
**CONCRETE REPAIR & IMPROVEMENTS**  
 PANAMA CITY BEACH, FLORIDA

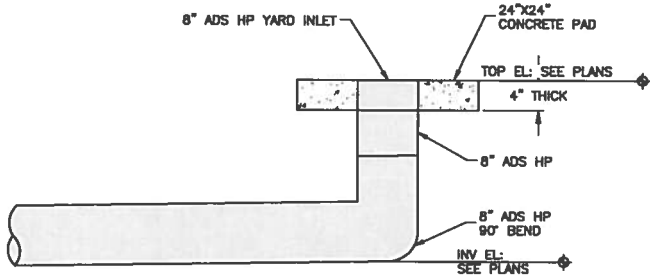
**5**

© PANHANDLE ENGINEERING, INC. ALL RIGHTS RESERVED. NO PART OF THIS DOCUMENT MAY BE REPRODUCED OR UTILIZED IN ANY FORM WITHOUT PRIOR WRITTEN AUTHORIZATION OF PANHANDLE ENGINEERING, INC.

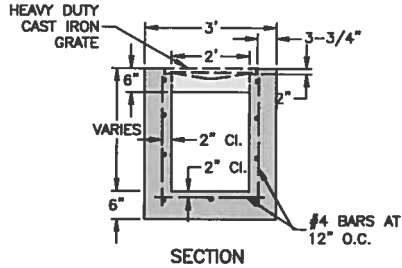
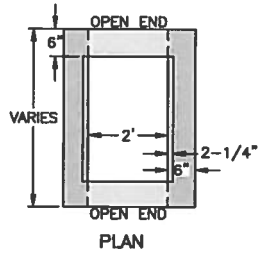




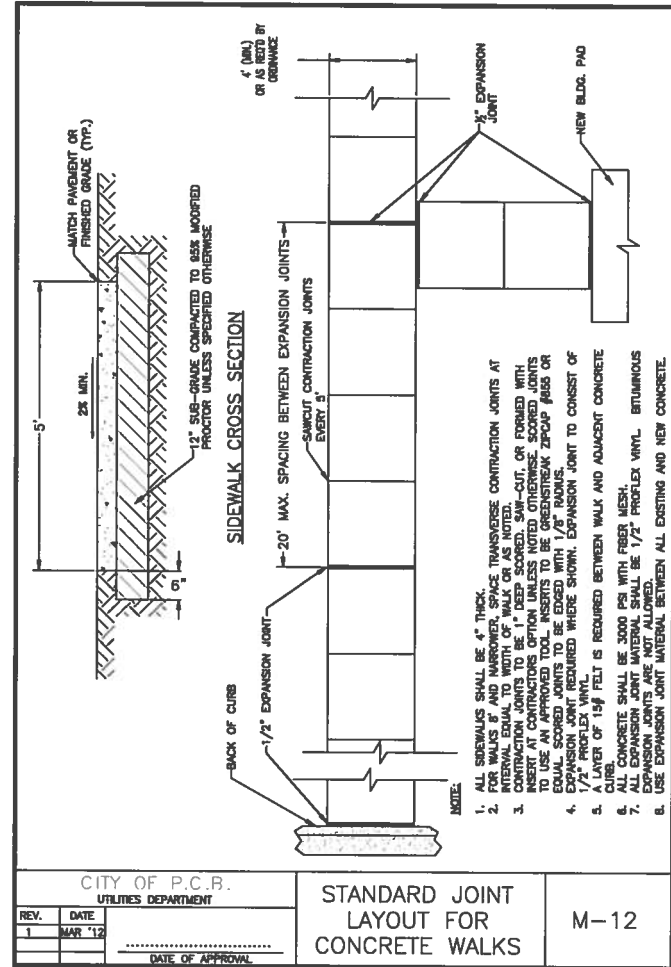
FOR SCALE VERIFICATION AFTER DUPLICATION, THIS LINE SHOULD BE 1" LONG



**8" ADS YARD DRAIN DETAIL**  
NOT TO SCALE



**TYPICAL TRENCH DRAIN DETAIL**  
NOT TO SCALE



- NOTE:**
1. ALL SIDEWALKS SHALL BE 4" THICK.
  2. FOR WALKS 8" AND NARROWER, SPACE TRANSVERSE CONTRACTION JOINTS AT INTERVAL EQUAL TO WIDTH OF WALK OR AS NOTED.
  3. CONTRACTION JOINTS TO BE 1" DEEP SCORED, SAW-CUT, OR FORMED WITH 1/2" CONCRETE PROFILES UNLESS NOTED OTHERWISE. SCORED JOINTS TO USE AN APPROVED TOOL. FINISHED JOINTS TO USE 2" x 4" x 1/2" Z-POP #665 OR EQUAL. SCORED JOINTS TO BE EDGED WITH 1/8" BADIUS.
  4. EXPANSION JOINT REQUIRED WHERE SHOWN. EXPANSION JOINT TO CONSIST OF 1/2" PROFLEX VINYL.
  5. A LAYER OF 15# FELT IS REQUIRED BETWEEN WALK AND ADJACENT CONCRETE.
  6. ALL CONCRETE SHALL BE 3000 PSI WITH FIBER MESH.
  7. ALL EXPANSION JOINT MATERIAL SHALL BE 1/2" PROFLEX VINYL. BITUMINOUS EXPANSION JOINTS ARE NOT ALLOWED.
  8. USE EXPANSION JOINT MATERIAL BETWEEN ALL EXISTING AND NEW CONCRETE.

CITY OF P.C.R. UTILITIES DEPARTMENT		STANDARD JOINT LAYOUT FOR CONCRETE WALKS	M-12
REV. 1	DATE MAR '12		
DATE OF APPROVAL			

NOTES:  
ALL CONCRETE SHALL BE 3000 PSI WITH FIBER MESH.

CAD FILE: CONCRETE EBRHW.dwg  
DWR: EBY: cak  
DATE: MARCH 2017  
SHEET NO: 7  
PROJECT NUMBER  
12047

**PANHANDLE ENGINEERING, INC.**  
ENVIRONMENTAL ENGINEERS • CIVIL ENGINEERS • LAND PLANNERS  
3005 South Highway 77 Lynn Haven, Florida 32444  
(850)832-0001 fax (850)942-0028 panhandleengineering.com

**CONSTRUCTION DETAILS**  
FRANK BROWN PARK  
CONCRETE REPAIR & IMPROVEMENTS  
PANAMA CITY BEACH, FLORIDA