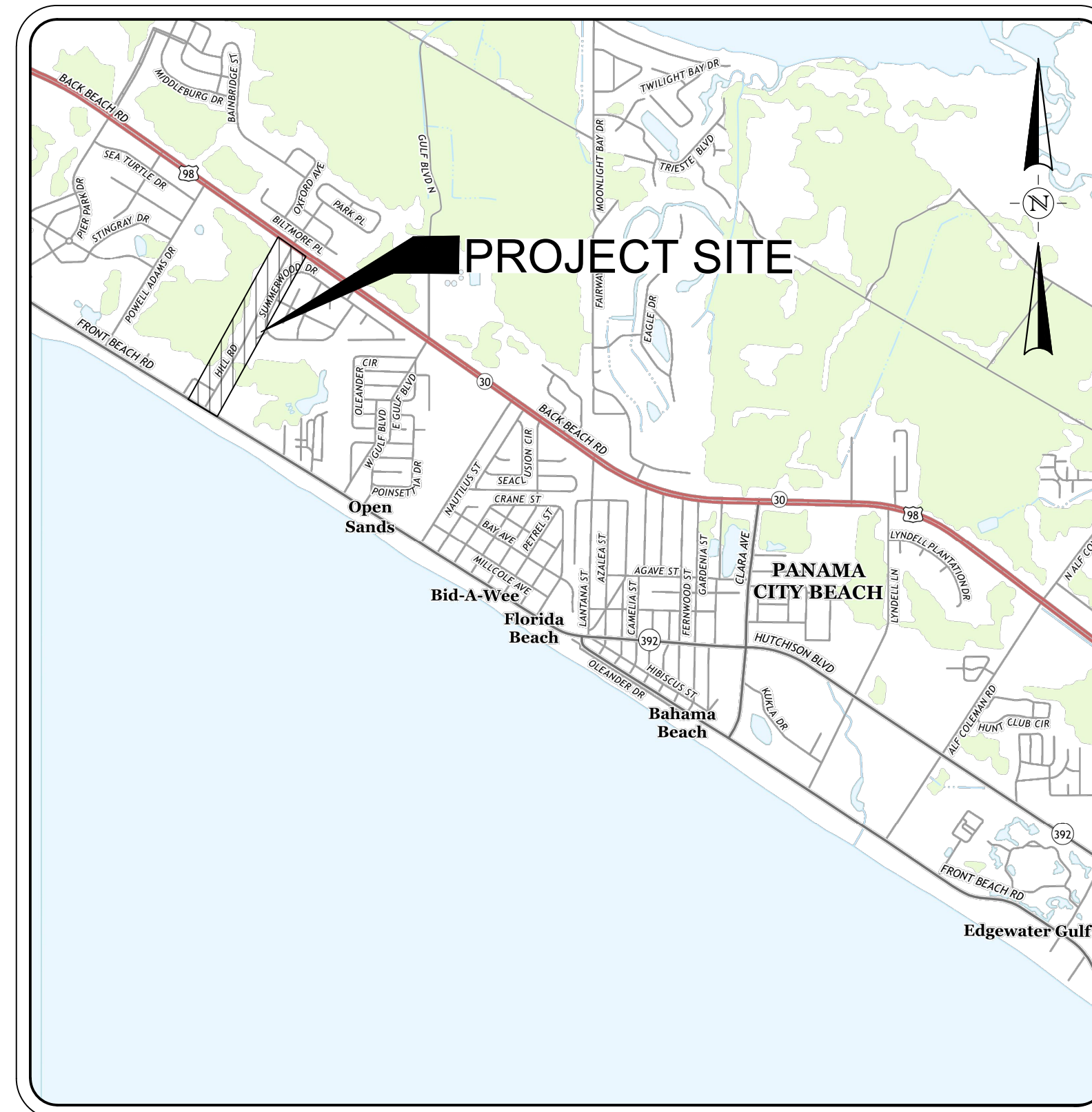


HILLS ROAD SIDEWALK SIDEWALK ADDITION

FOR
CITY OF PANAMA CITY BEACH, FLORIDA
HILLS ROAD, PANAMA CITY BEACH, FLORIDA 32413
FEBRUARY 2023



LOCATION MAP

NOT TO SCALE

INDEX OF SHEETS

SHEET No.	SHEET DESCRIPTION
1	COVER SHEET
2	GENERAL NOTES
3	GENERAL DETAILS
4	MID-BLOCK CROSSWALK DETAIL
5	DEMOLITION PLAN
6	SIDEWALK PLAN
7	SIDEWALK PLAN
8	SIDEWALK PLAN
9	SIDEWALK SECTIONS
10	SIDEWALK SECTIONS
11	SIDEWALK SECTIONS

SURVEYOR

SOUTHEASTERN SURVEYING
AND MAPPING CORPORATION
1130 HIGHWAY 90
CHIPLEY, FL 32428
CONTACT: THOMAS MEAD, PSM
EMAIL: INFO@SOUTHEASTERSURVEYING.COM
TEL: 850-638-0790

SURVEYED DATE:

9/28/2022

BENCHMARK(S):

SEE PLAN SHEETS FOR INFORMATION

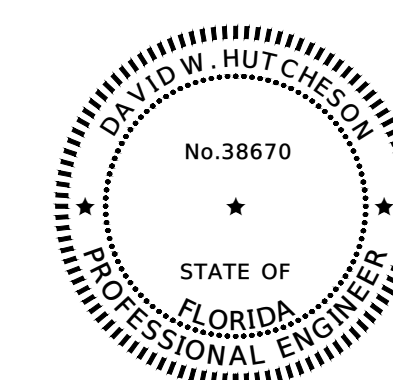
GOVERNMENT SPECIFICATION/DESIGN GUIDELINES:

FLORIDA DEPARTMENT OF TRANSPORTATION FY 2022-23 STANDARD PLANS AND APPLICABLE DESIGN STANDARDS REVISIONS (DSRs) AT THE FOLLOWING WEBSITE:
<https://www.fltdot.gov/design/standardplans/current/default.shtm>

FLORIDA DEPARTMENT OF TRANSPORTATION FY 2023-24 STANDARD SPECIFICATIONS FOR ROAD AND BRIDGE CONSTRUCTION AT THE FOLLOWING WEBSITE:
<https://www.fltdot.gov/programmanagement/implemented/specbooks/default.shtm>

STATE OF FLORIDA EROSION AND SEDIMENT CONTROL DESIGNER AND REVIEWER MANUAL, LATEST EDITION:
<https://www.flrules.org/Gateway/reference.asp?No=Ref-04227>

PREPARED BY:



PRIME-CIVIL
HALFF ASSOCIATES, INC.
130 N. RICHARD JACKSON BLVD., SUITE 103
PANAMA CITY BEACH, FLORIDA 32307
TEL. (850) 848-9414 www.halff.com
FL CA 33380 FL LC 26000645 FL LB 8348

CONTACT:
DAVID W. HUTCHESON, P.E.
(850) 848-9414
DHUTCHESON@HALFF.COM

THIS ITEM HAS BEEN DIGITALLY SIGNED
AND SEALED BY DAVID W. HUTCHESON, P.E.
PRINTED COPIES OF THIS DOCUMENT ARE
NOT CONSIDERED SIGNED AND SEALED
AND THE SIGNATURE MUST BE VERIFIED ON
ANY ELECTRONIC COPIES

OWNER/CLIENT:



17007 PANAMA CITY BEACH PARKWAY
PANAMA CITY BEACH, FL 32413
TEL. (850) 233-5100
www.PCBFL.GOV.com

KATHRYN YOUNCE, E.I., CFM
ASSISTANT PUBLIC WORKS DIRECTOR
OFFICE: (850)233-5100 EXT. 2407



Know what's below.
Call before you dig.

THE INFORMATION SHOWN ON THESE DRAWINGS INDICATING SIZE, TYPE AND LOCATION OF UNDERGROUND, SURFACE, AND AERIAL UTILITIES IS NOT GUARANTEED TO BE EXACT OR COMPLETE. THE CONTRACTOR SHALL CONTACT THE GEORGETOWN AREA "ONE CALL" SYSTEM AT 1-800-344-8377 (DIG TESS) 48 HOURS PRIOR TO BEGINNING ANY EXCAVATION FOR EXISTING UTILITY LOCATIONS. THE CONTRACTOR SHALL ALSO BE FULLY RESPONSIBLE FOR FIELD VERIFYING LOCATIONS AND ELEVATIONS OF ALL EXISTING UTILITIES AFFECTED BY CONSTRUCTION FOR THIS PROJECT IN ORDER TO AVOID DAMAGING THOSE UTILITIES, AND SHALL IMMEDIATELY ARRANGE FOR REPAIR AND RESTORATION OF CONTRACTOR-DAMAGED UTILITIES TO THE UTILITY COMPANY'S APPROVAL AT THE EXPENSE OF THE CONTRACTOR.