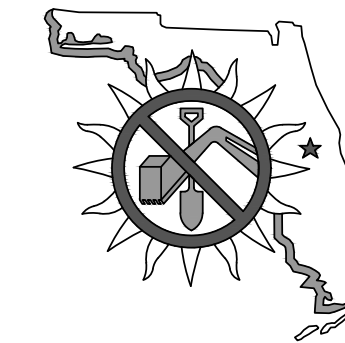


CIVIL CONSTRUCTION PLANS FOR: COLONY CLUB DRAINAGE SWALE

PREPARED FOR:
CITY OF PANAMA CITY BEACH
PANAMA CITY BEACH
BAY COUNTY, FLORIDA



48 HOURS
BEFORE YOU DIG
CALL SUNSHINE ONE
1-800-432-4770
www.callsunshine.com

CITY OF PANAMA CITY BEACH

Mark Sheldon	Mayor
Paul Casto	Ward I/Vice Mayor
Phil Chester	Ward II
Mary Coburn	Ward III
Michael Jarman	Ward IV
<hr/>	
Drew Whitman	City Manager
Holly White	Assit. City Manager

PREPARED BY:



203 ABERDEEN PKWY, PANAMA CITY, FL 32405
(850) 522-0644

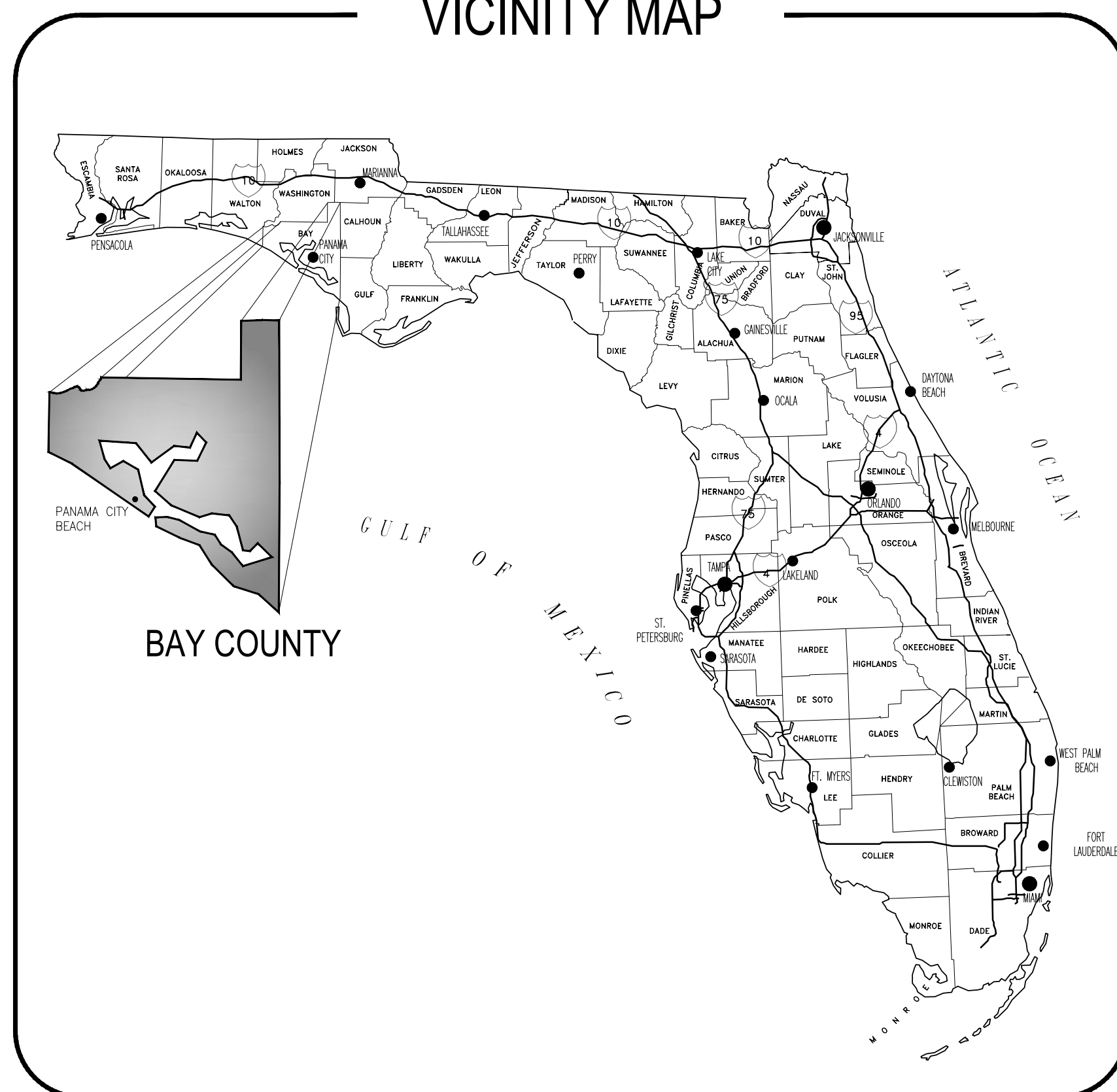
PROJECT NUMBER - 50089305

NOVEMBER, 2022

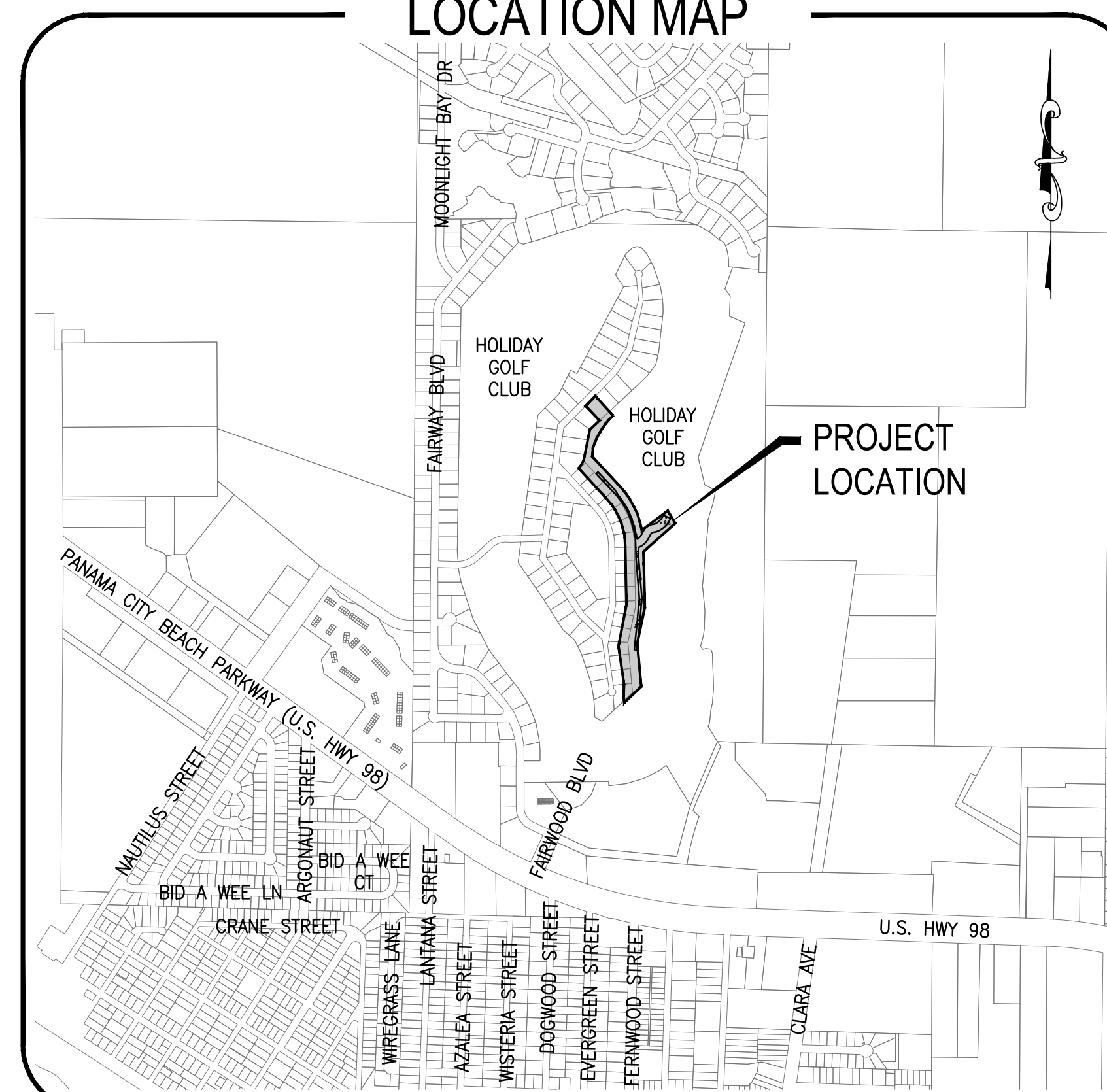
PRELIMINARY DOCUMENTS
NOT FOR CONSTRUCTION

REV. NO.	REV. DATE	REVISION DESCRIPTION	RELEASED TO	RELEASE DATE

VICINITY MAP



LOCATION MAP



DRAWING INDEX

TITLE	NO.
COVER	
GENERAL NOTES	C1
STORM WATER POLLUTION PREVENTION PLAN	C2
EXISTING CONDITIONS, DEMOLITION AND EROSION CONTROL	C3
CONSTRUCTION ENTRANCE PATH	C4
PLAN & PROFILE - SWALE 1	C5-C11
PLAN & PROFILE - SWALE 2	C12-C13
MISCELLANEOUS DETAILS	D1