

# PANAMA CITY BEACH CONSERVATION PARK



## TRAIL RULES AND REGULATIONS

The City of Panama City Beach has established the Panama City Beach Conservation Park in cooperation with the Florida Department of Environmental Protection for the enjoyment of bikers, hikers and nature lovers. Approximately 700 acres of adjacent land, located east of Baxley Homestead Trail, are owned by the Northwest Florida Water Management District and are also available to the public.

You are one of many who use and enjoy these trails and boardwalks. Please follow these simple rules and care, share, and protect by leaving no trace of your visit; your actions make a difference:

1. The trails are open daily from sunrise to sunset; any use after these hours is prohibited.
2. The only parking available for vehicles is provided at the designated parking lot located off Conservation Drive. The City of Panama City Beach is not responsible for articles lost or stolen.
3. No motorized vehicles of any kind are allowed on the trails, except for battery powered chairs for handicap accessibility.
4. The City of Panama City Beach does not allow discharge of firearms on City property; however, adjacent property owners may allow hunting on their land. Therefore, if using Conservation Park during hunting season, please use extreme caution along the outer boundaries. No hunting or taking of any kind is permitted in Conservation Park.
5. Please help keep the trail, facilities, and parking area clean. Do not litter, deposit all waste in receptacles provided at the trailhead parking area.
6. Dogs are permitted, but must be kept on leashes and controlled at all times. No more than 2 dogs per person are allowed. Please make sure to clean up after your pets!!
7. No horses or equestrian activity of any kind is permitted on the trails.
8. No smoking, campfires, or open flames are permitted within the Park.
9. No overnight stays or camping is permitted within the Park.
10. No person shall possess or consume alcoholic beverages within the Park.
11. Stay on the trails at all times; use of any other areas of the Park is prohibited.
12. Respect wildlife and plants while you visit their home. Do not approach wildlife.
13. Release of any animal within the Park is prohibited.
14. Preserve your heritage; do not remove artifacts or vegetation from the forest.
15. Yield to others.
16. Let nature's sounds prevail. Keep loud voices to a minimum. Wear ear phones when using music players.

Please report violations of these rules to PCB Utilities Operation (850) 233-5050. Non emergency calls for police assistance should be directed to the Panama City Beach Police Department Dispatch at (850) 233-5000. Emergency and medical calls should be directed to 911. When you call for help, be sure to give your location. You are on the Panama City Beach Conservation Park Trails in Panama City Beach. It is very important that you make note of what trailhead you are on and the direction of foot travel you followed. Please remember that your cell phone may not work in some areas due to tower location and terrain.

Please make note that there is no drinking water available on the trails. Trail users must supply their own water. Drinking water is available at the restrooms located off Conservation Drive adjacent to the parking area.

We hope that you enjoy the Panama City Beach Conservation Park and facilities. Please follow good hiking and biking etiquette and safety practices.

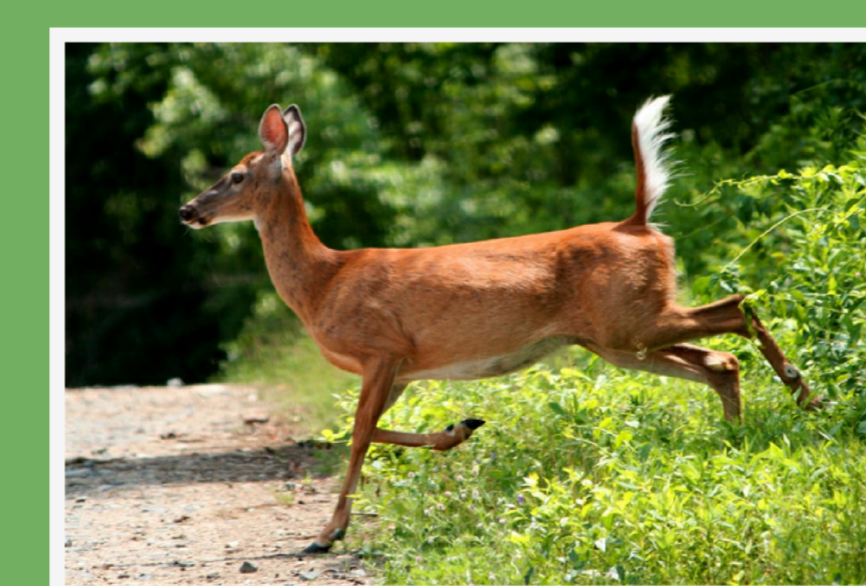
## Park Trail Map

**TRAIL ROUTES:**

- (Green) = 1.7 miles
- (Yellow) = 4 or 6 miles
- (Blue) = 5.2 or 6.5 miles
- (Orange) = 9.5 miles
- (Red) = 11 miles

Brochures with additional trail route and length options are available near the trail head.

### SOME OF OUR PARK RESIDENTS:



Whitetail Deer



Alligator



Coyote



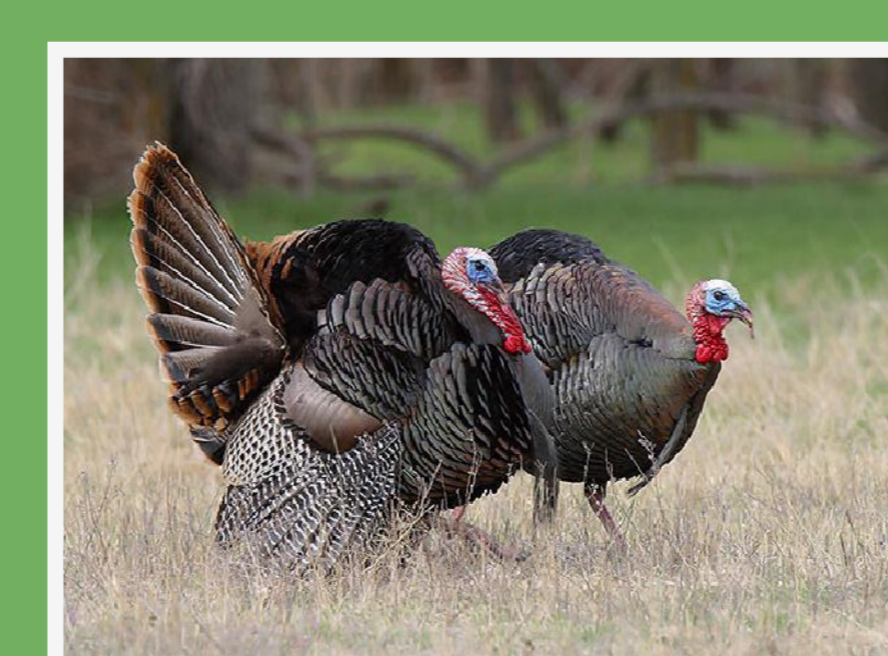
Wild Boar



Osprey



Woodpecker



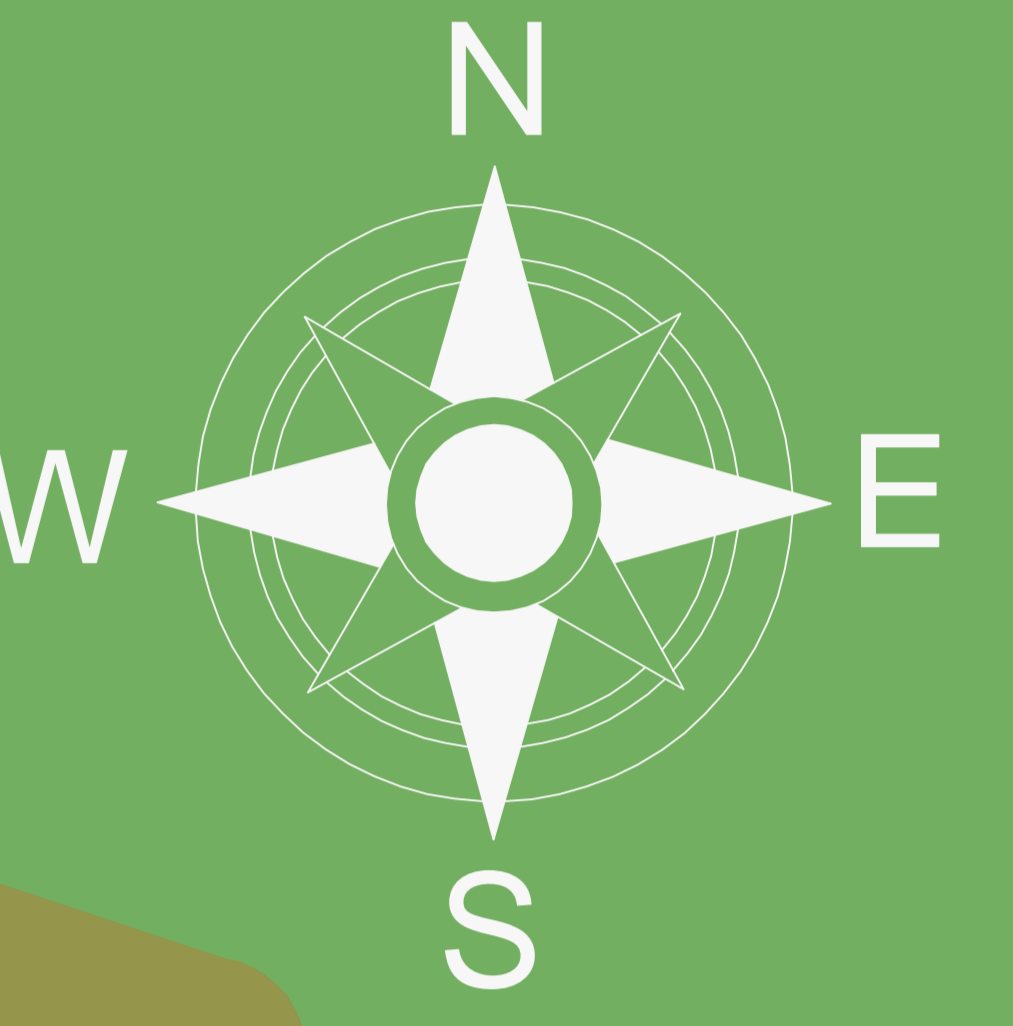
Turkey



Snake



Raccoon



- YOU ARE HERE
- KIOSK - PARK MAP & BENCH
- TRAIL ROUTES
- OTHER TRAILS

## Parking - Restrooms - Trail Head

SEE OPPOSITE SIDE OF THIS KIOSK FOR PARK POINTS OF INTEREST AND CONSERVATION ACTIVITIES