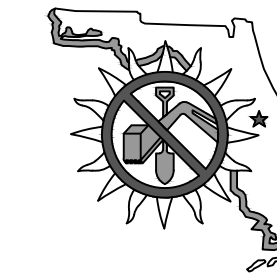




# CITY OF PANAMA CITY BEACH

## RE-ROOFING PROJECT P.C.B. POLICE DEPARTMENT IMPOUND BUILDING



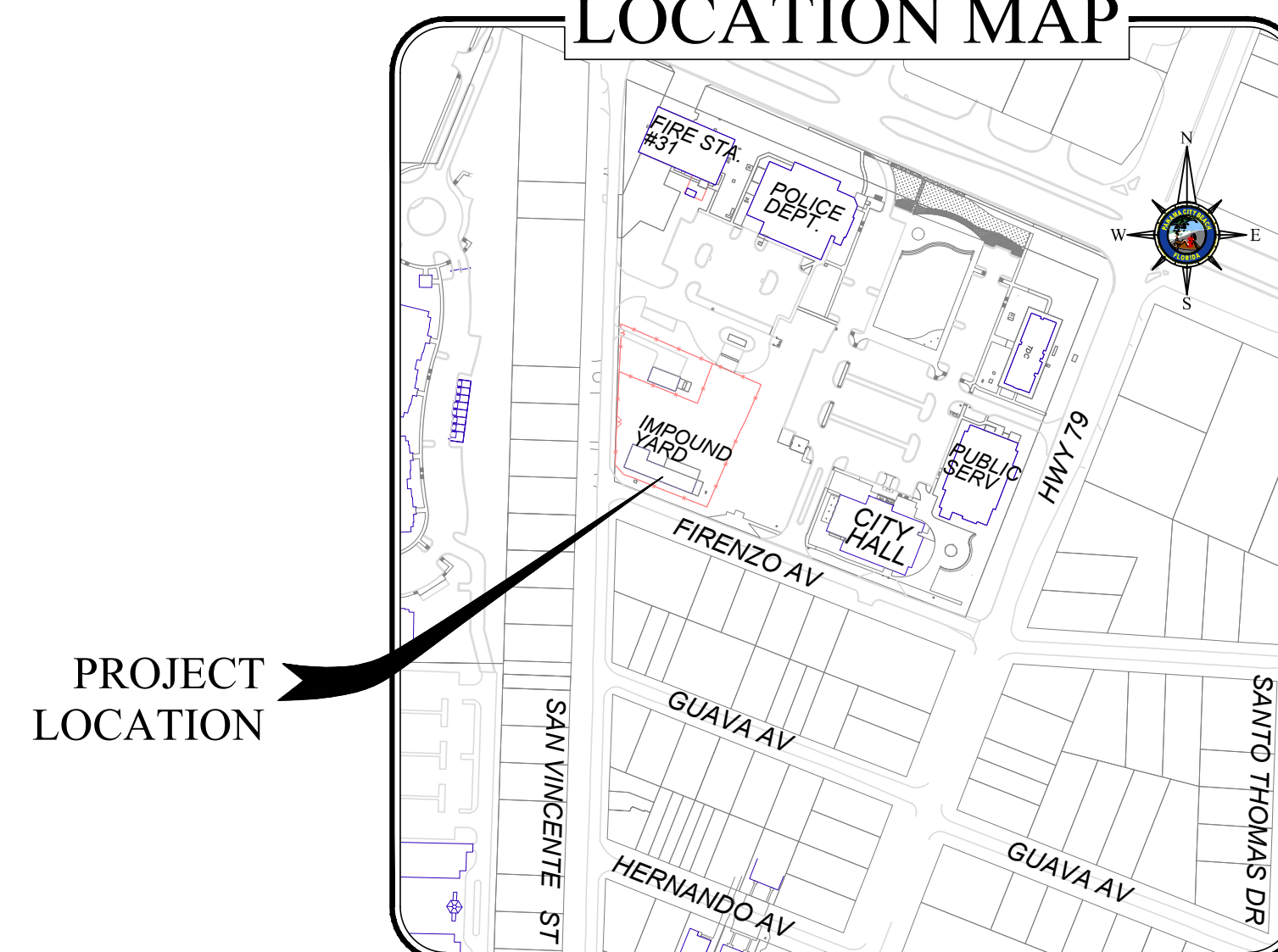
48 HOURS  
BEFORE YOU DIG  
CALL SUNSHINE ONE  
1-800-432-4770  
www.callsunshine.com



### INDEX OF PLANS

TITLE	NO.
COVER SHEET AND LOCATION MAP	1
FLOOR AND ROOF PLANS	2
ELEVATIONS	3
ROOF DETAILS	4

### LOCATION MAP



PROJECT  
LOCATION

### CITY OFFICIALS

MARK SHELDON	MAYOR
PAUL CASTO	COUNCILMAN - WARD 1
PHIL CHESTER	COUNCILMAN - WARD 2
GEOFF McCONNELL	COUNCILMAN - WARD 3
MICHAEL JARMAN	COUNCILMAN - WARD 4
AL SHORTT	INTERIM CITY MANAGER
LYNNE FASONE	CITY CLERK



CITY OF PANAMA CITY BEACH  
116 S. ARNOLD RD.  
PANAMA CITY BEACH, FL. 32413  
PHONE: (850) 233-5054

### RE-ROOFING PROJECT P.C.B. POLICE DEPARTMENT IMPOUND BUILDING

#### COVER/INDEX

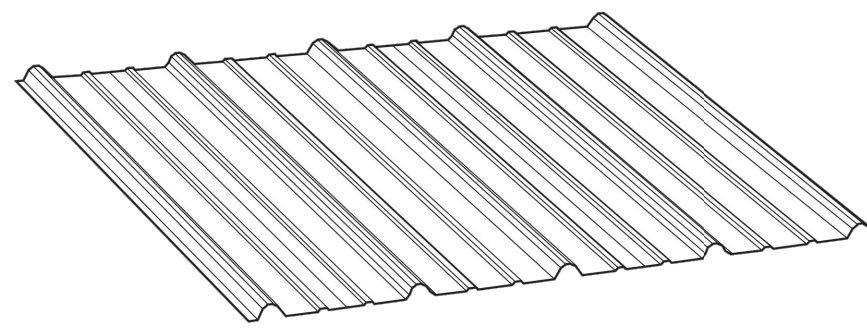
#	DATE	APPROVED BY	REVISION

SCALE N/A	DESIGNED BY AES	DRAWN BY MAS	SHEET NO.: 1  OF 4
FILE PCB STORAGE BUILDING-Copy.dwg	CHECKED BY MES	DATE 1/5/2021	



# Technical Information

## SM-Rib Panel



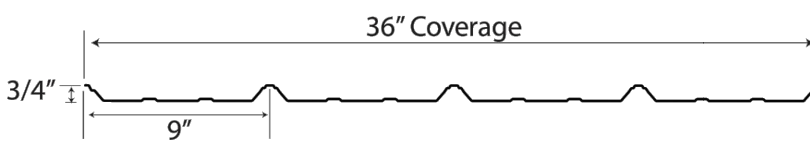
### Testing Data and Specifications

Accelerated Testing of coating 2000 hours per ASTM G23.  
 Salt Spray testing of coating 1000 hours per ASTM B117.  
 Fire Testing per ASTM E108 or UL790.  
 Wind Driven Rain Test per TAS 100.

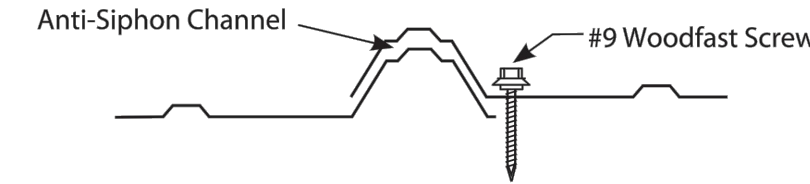
### Code Approvals<sup>1</sup>

UL Fire Resistance Directory # R20735  
 Miami Dade Code Approval NOA # 07-0924.07  
 Florida Building Code Approval # FL-9767 (26 Gauge)

### Profile Detail



### Sidelap Detail

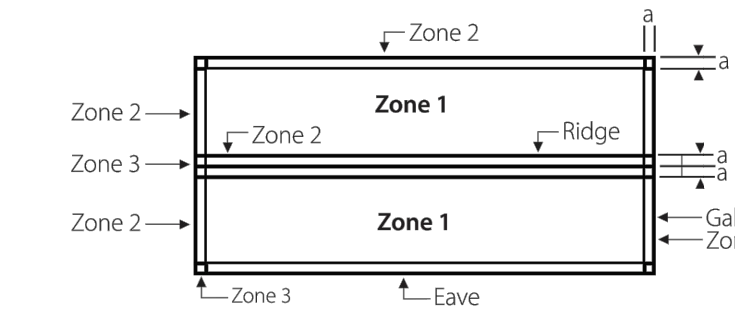


## Recommended Fastening Schedule

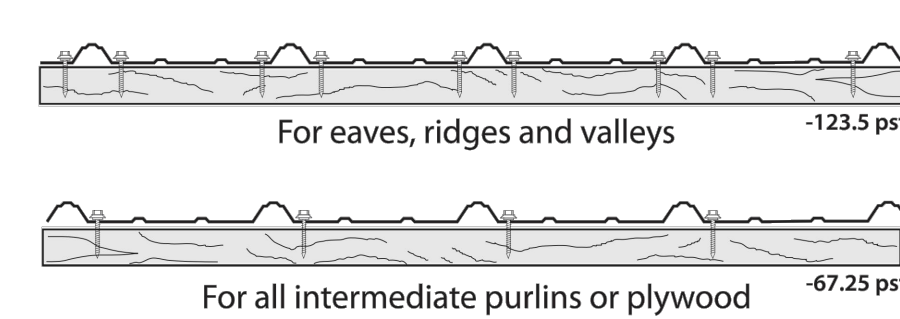
Maximum Tested Design Pressures <sup>1,2,3,4</sup>		
Plywood/ OSB Decking Min. 15/32" outside Miami-Dade Min. 19/32" in Miami-Dade	Field Zone 1	Perimeter and Corners Zone 2 and Zone 3
<b>Maximum Design Pressure</b>	-67.25 psf	-123.5 psf
<b>Maximum Fastener Spacing</b>	24" on center	24" on center

1. Extrapolation and rational analysis by a Florida Licensed Architect or Structural Engineer is allowed outside the Miami-Dade HVHZ compliance area. 2. Extrapolation and rational analysis shall not be allowed above the maximum tested design pressures within the Miami-Dade HVHZ compliance area. 3. Interpolation is allowed between Field and Perimeter & Corner test pressure values. 4. For corresponding wind speeds, refer to table 1609.6.2.1(2) of the Florida Building Code.

### Roof Zones

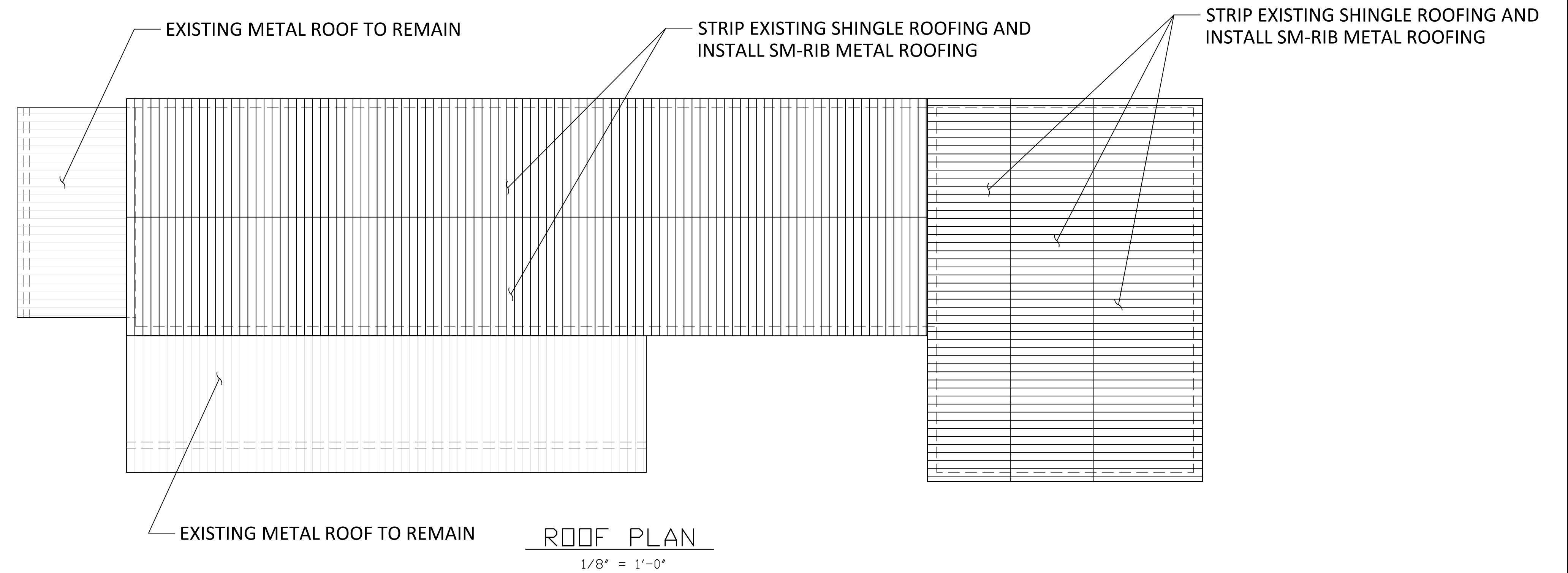


### O.C. Spacing and Fastening Detail



Note: Dimension (a) is defined as 10% of the minimum width of the building or 40% of the mean height of the roof, whichever is smaller, however, (a) cannot be less than either 4% of the minimum width of the building or 3 feet.

<sup>1</sup> Code Approval numbers may have changed since publication. For the most recent code approval numbers, contact Southeastern Metals' Technical Department or refer to the appropriate code agency.



## Installation Information

### Delivery, Handling and Storage

Proper care in storing and handling metal panels is essential in providing you with years of service. Panels should be installed immediately to prevent storage oxidation or paint peel. Any panels not immediately installed must be kept dry and stored in an indoor area. Extreme caution should be taken in order to prevent moisture penetration of the stacks by rain, snowfall or condensation. Condensation is moisture that accumulates naturally from the change in temperature of the material nested in a stack where adequate ventilation has been restricted.

Store the panels off the ground, on wooden blocks with one end slightly elevated. Cut banding to allow the stack to expand and allow a small amount of ventilation. Cover the stack with loose canvas tarp or waterproof paper. Covering should be placed over the stack but never tightly secured to the ground to allow air flow. Do not cover metal with plastic as this can create condensation.

### Safety Precautions

It is the responsibility of the buyer to ensure the safe installation of these product systems. Metal panels have sharp edges, therefore protective clothing and gloves should be utilized. To prevent eye injury, safety glasses must be worn when drilling or cutting steel panels. Steel panels can become slippery when wet. Use extreme care when walking on any roofing panel. Proper underlayment is necessary to prevent fall-through. Plywood is recommended on all non-structural panel applications. Do not work on steel panels when wet or when weather conditions are not suitable for safe installation.

Southeastern Metals recommends all installers comply with the Florida Fall Protection Act, all OSHA (Occupational Safety & Health Administration) requirements (#3146, dated 1995), and any other applicable safety rules or laws.

### Panel

There are three critical measurements involving roof panels: the length required at the eave, the peak end and the amount of panel lap (if required). In each case a certain measurement is required. Check each measurement to ensure panel placement gives you the distance required at the eave, peak and endlap condition (if required). In most cases any variance can be taken out at the eave and peak.

### Accessories

This publication details the standard line of trims and accessories for SM-Rib roofing and siding applications. Additional trims, including custom accessories, are available upon request.

### Substrate

In residential applications, Southeastern Metals recommends the use of minimum 15/32 plywood or 7/16 OSB decking. In addition, we specify a 30# felt be installed in accordance with local building code requirements to control condensation. **NOTE:** Southeastern Metals does not recommend the use of square headed cap nails. If tin tabs are used to secure the 30# felt to the decking material, Southeastern Metals recommends a separation sheet of 15# felt or rosin paper be used over the 30# felt, applied in the same direction as the panels. If the building parameters differ from those stated in the manufacturer's recommended fastening schedule, specific fastening calculators must be computed by the engineer of record.

### Metal Re-Roofing Over Shingles

Southeastern Metals' metal roofing panels may be installed over existing asphalt shingles, provided the roof decking integrity has been confirmed to be free of any moisture decay that would prevent un-levelness or fastener pull out capacity. **NOTE:** Ordinances regarding roofing applications over existing shingles vary by county and state. Check your local building code organization for more information.

The panels may be applied directly over one layer of existing shingles, provided a separation sheet is installed on top to the shingles. We require a minimum 30# felt installed in the same direction as the panels.

Metal roofing can also be separated from the moisture barrier by optional 1" x 3" battens as furring, spaced a maximum of 24" on center and fastened according to our recommended application details. **CAUTION:** Direct contact between pressure treated lumber and metal roofing must be avoided to prevent corrosion.

### Metal Roofing Fire Resistance Ratings

Southeastern Metals' metal roofing panels have been analyzed for fire resistance ratings according to test criteria set forth by Underwriters Laboratories "Standard Fire Tests of Building Construction and Materials" (ANSI/UL 263), and ASTM E119 and NFPA 251.

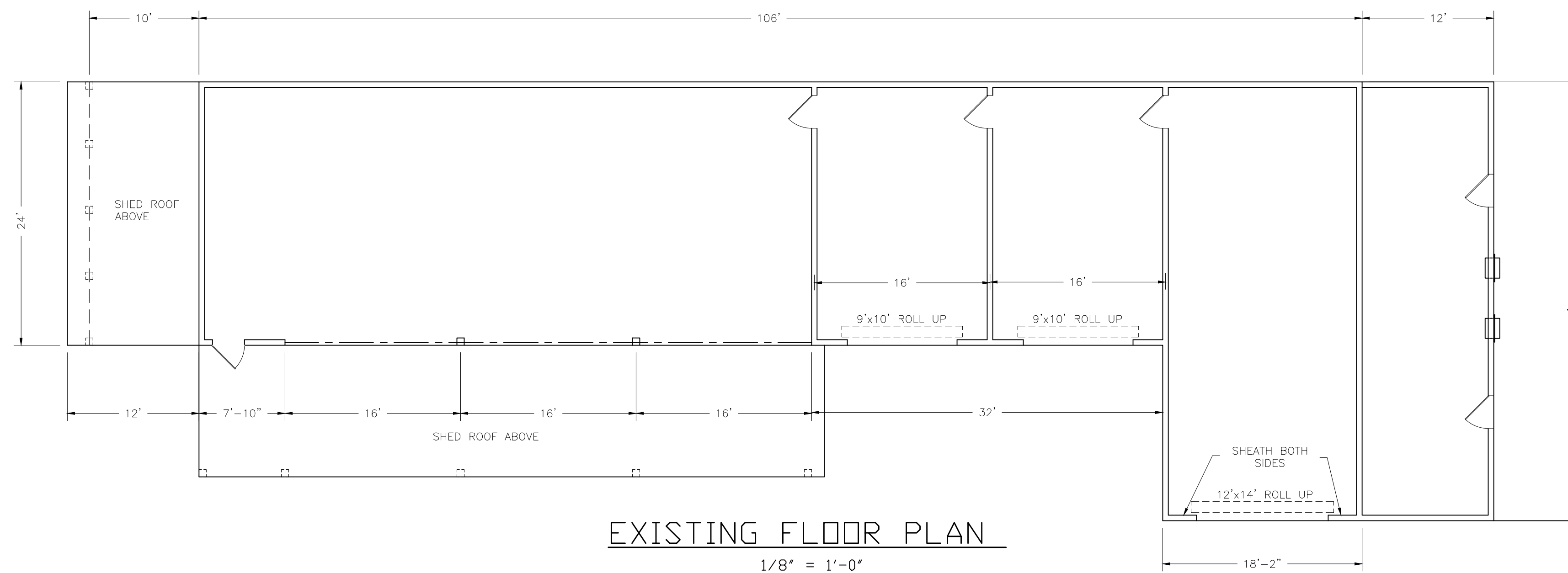
The fire resistance rating is for the total assembly and not just the external metal roofing panels. In general, the test criteria is to evaluate the assemblies ability to continue to support the imposed loads and to resist the passage of flame, high temperature, or hot gasses which will ignite combustible sub-assembly, framing, or decking materials from an exterior source. For detail information on specific assembly ratings see the UL Fire Resistance Directory.

Attaining a class "A" or "B" fire rating requires the installation of one of the following - a minimum 1/4" thick Georgia Pacific "Dens Deck"; a minimum 4mm thick Partek Insulation's, Inc. "Roctex"; a minimum 52 1/2# Elks "Versa Shield"; a minimum 5/8" water resistant type X gypsum sheathing with treated core and facer; or any other product with a current product approval - over the combustible deck prior to installing the metal roofing panels.

### Trimming and Cutting Steel Panels

Whether cutting with the profile (length-wise) or across the panel (width wise), it is best to use an electric nibbler, shears or hand tin-snips. It is very important to cut panels one at a time with the finish side of the panel facing down on wood blocks. Care should be taken to ensure that the hot metal particles and filings from cutting and securing the panel do not become embedded in the panel.

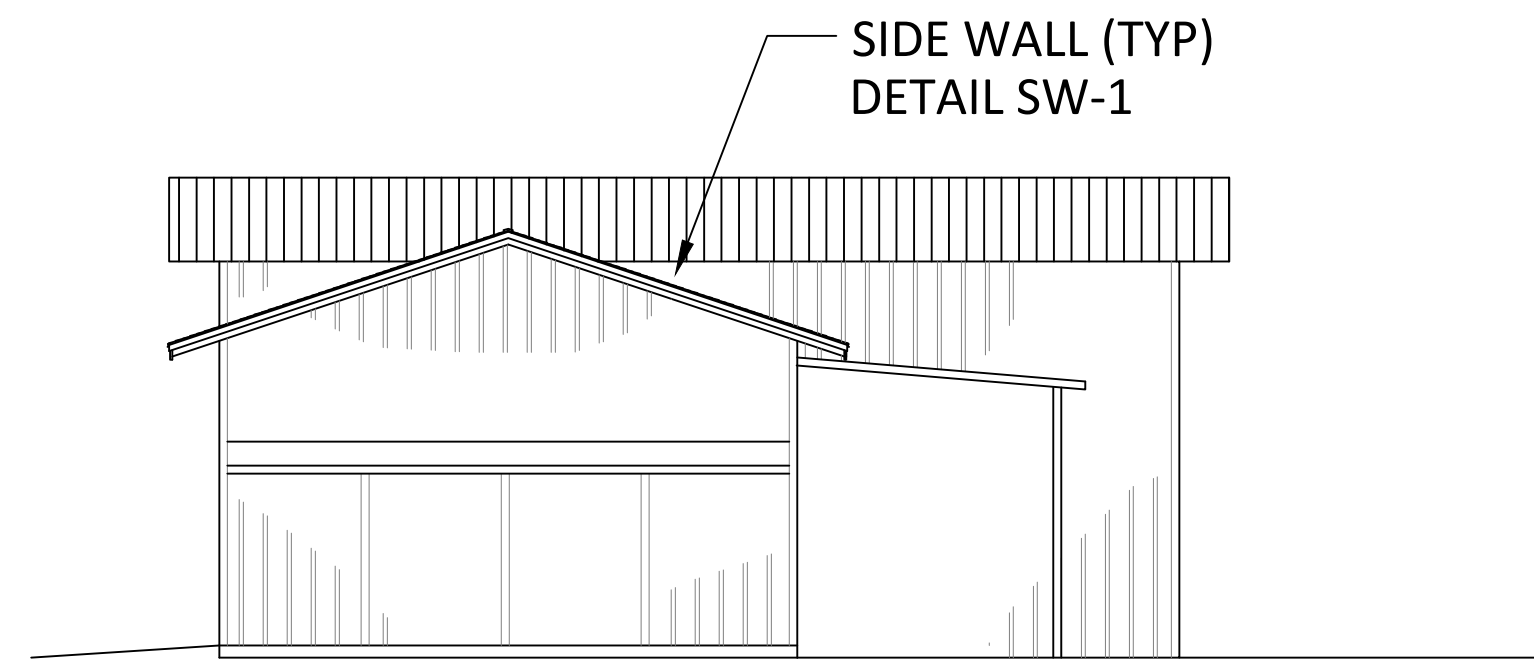
**CAUTION:** Filings from screw and panel cuttings must be cleaned off the panel after screws have been applied through the panel to avoid rust marks or "bleeding" on the panels. Failure to comply with the above procedures relieves Southeastern Metals, and its parent company, Gibraltar Industries, of responsibility for any resulting damage to, or deterioration of the finish and voids any paint or finish warranty.



### NOTES:

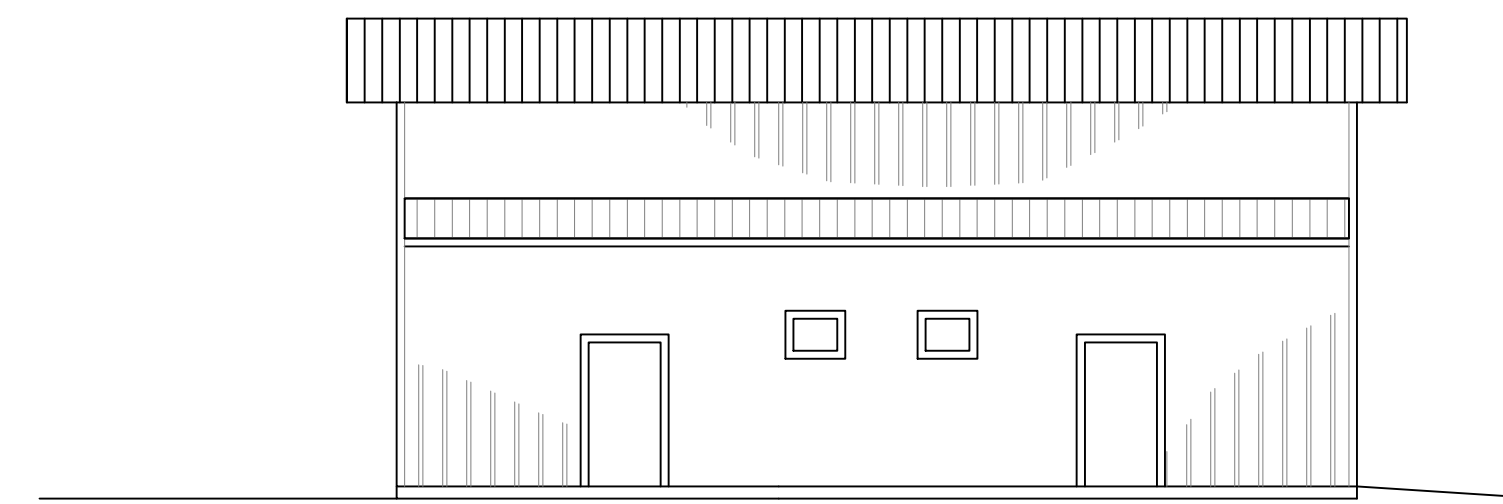
- Shingles and underlayment are to be removed and disposed of legally.
- Base bid shall include removal and replacement of up to 8 sheets (256 s.f.) of damaged roof sheathing. New sheathing shall be rated 15/32" CDX. Entire sheet shall be removed. No partial sheet replacement.
- Base bid shall include renailling of roof deck sheathing w/ 8d ring shank nails. Nail spacing shall be 6" oc edges and 12" oc field.
- 30# asphaltic felt underlayment shall be installed per roofing panel manufacturers recommendations.
- Roofing is to be SM-Rib 26 gauge MILL FINISH. Metal panels installed per manufacturers recommendations.
- Access to this building is restricted and must be coordinated with the PCB Police Dept. (Capt. Wayne Maddox, 850-258-8266).

REVISIONS			DATE: 1-5-21	CITY OF PANAMA CITY BEACH	SEAL	PCBPD IMPOUND BUILDING	SHEET NUMBER 2 OF 4		
NO.	DATE	BY	SCALE: SHOWN		116 SOUTH ARNOLD ROAD		PANAMA CITY BEACH, FLORIDA 32413	FLOOR & ROOF PLAN	PROJECT NUMBER
			DESIGNED BY: A.E.S.						
			DRAWN BY: M.A.S.						
			CHECKED BY: A.E.S.						
			FILE NO: PCB STORAGE BUILDING-Copy.dwg						



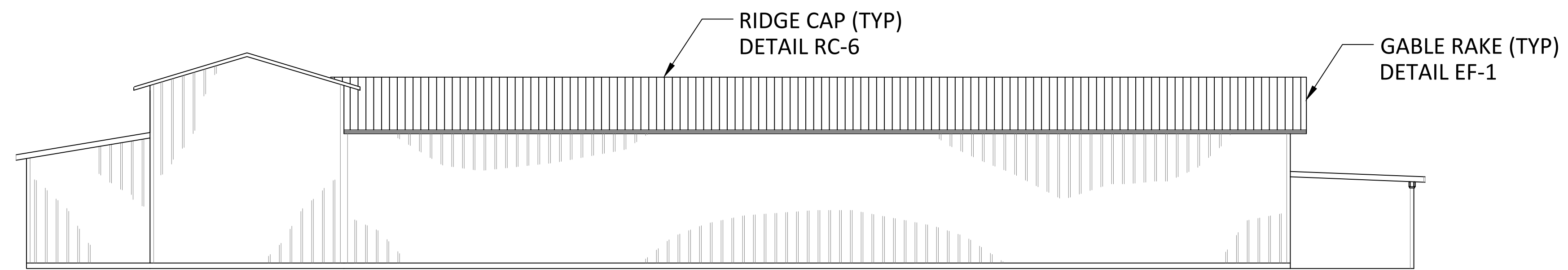
EAST ELEVATION

1/8" = 1'-0"



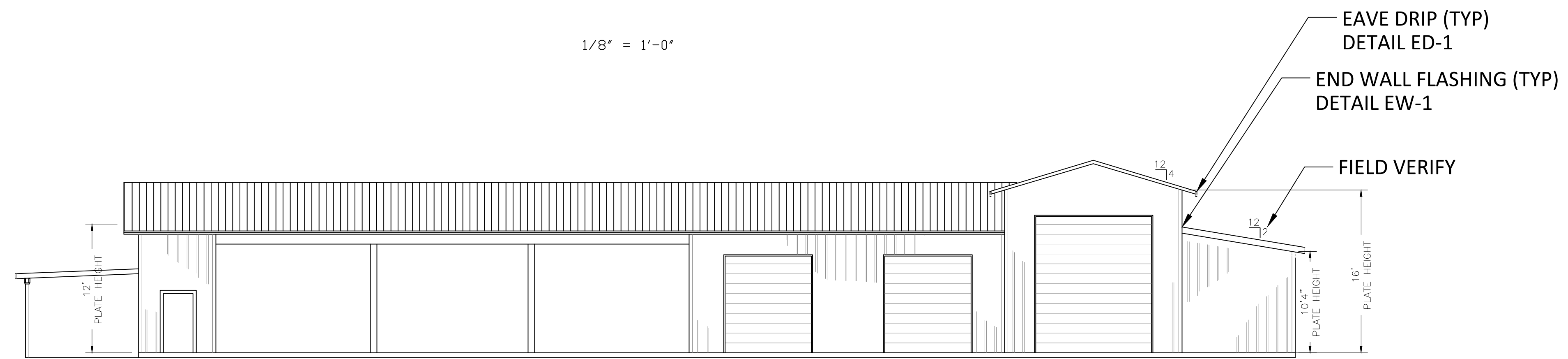
WEST ELEVATION

1/8" = 1'-0"



SOUTH ELEVATION

1/8" = 1'-0"



NORTH ELEVATION

1/8" = 1'-0"

REVISIONS		
NO.	DATE	BY

DATE:	1-5-21
SCALE:	SHOWN
DESIGNED BY:	A.E.S.
DRAWN BY:	M.A.S.
CHECKED BY:	A.E.S.
FILE NO:	PCB STORAGE BUILDING-Copy.dwg

CITY OF  
PANAMA CITY BEACH

116 SOUTH ARNOLD ROAD  
PANAMA CITY BEACH, FLORIDA 32413

SEAL

PCBPD  
IMPOUND BUILDING

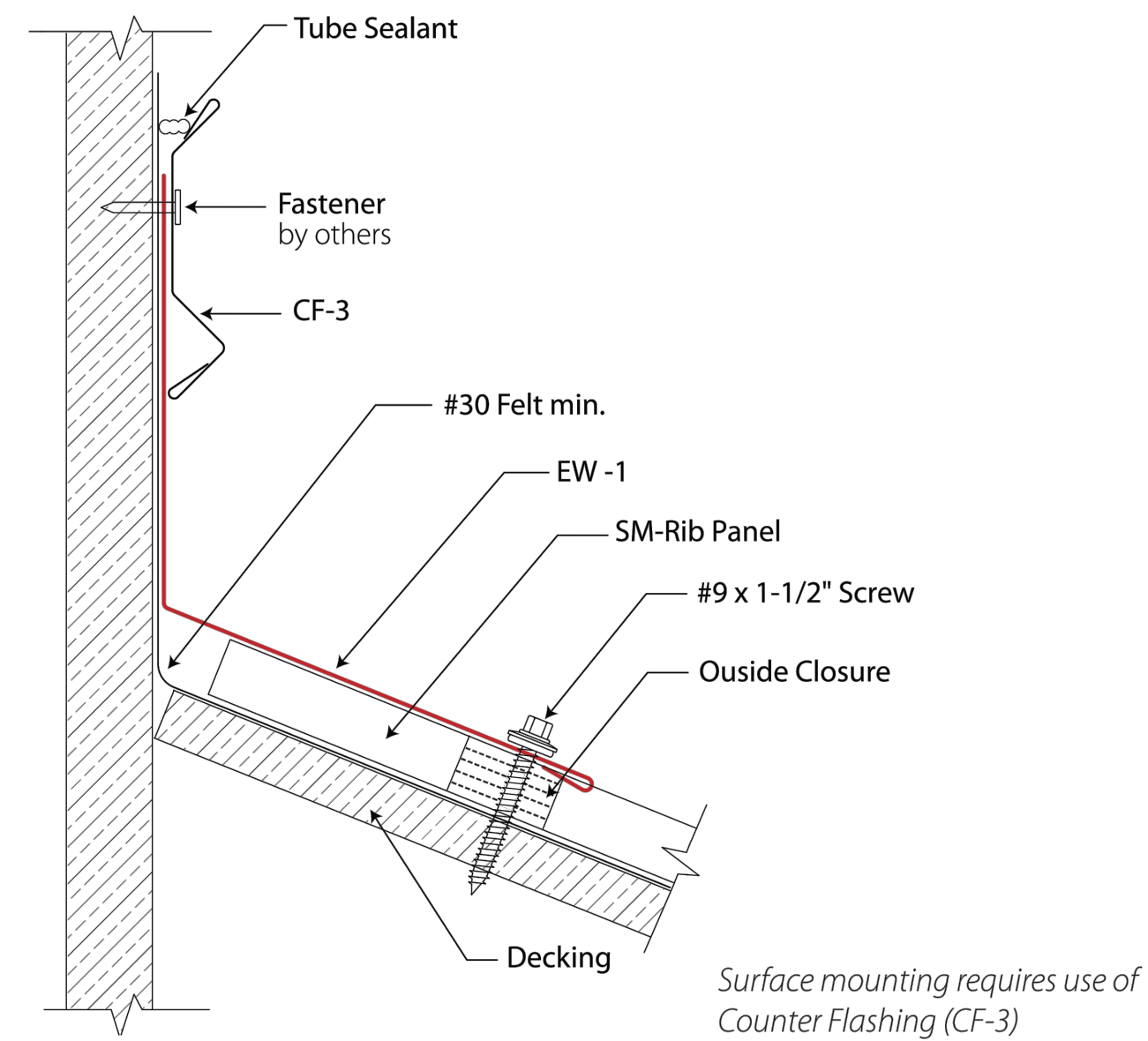
ELEVATIONS

SHEET NUMBER  
3 OF 4

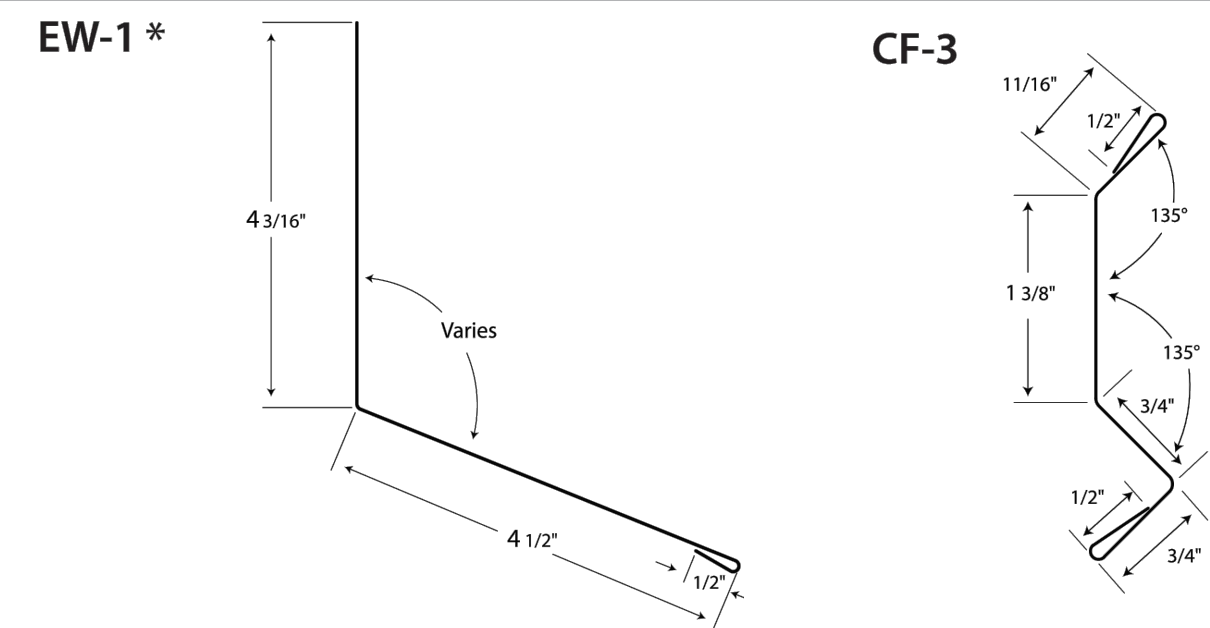
PROJECT NUMBER



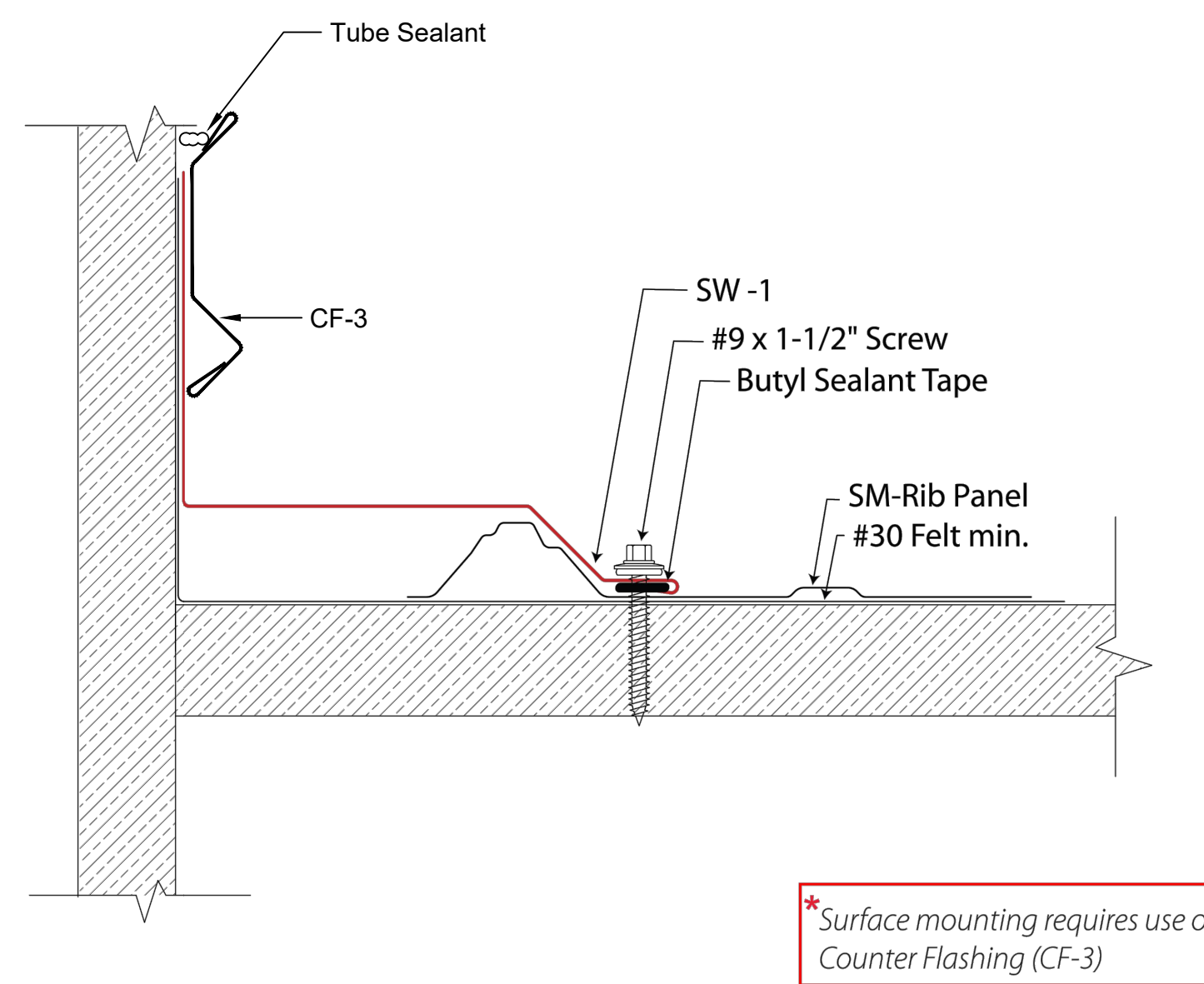
**End Wall Flashing EW-1 (10' Lengths)**



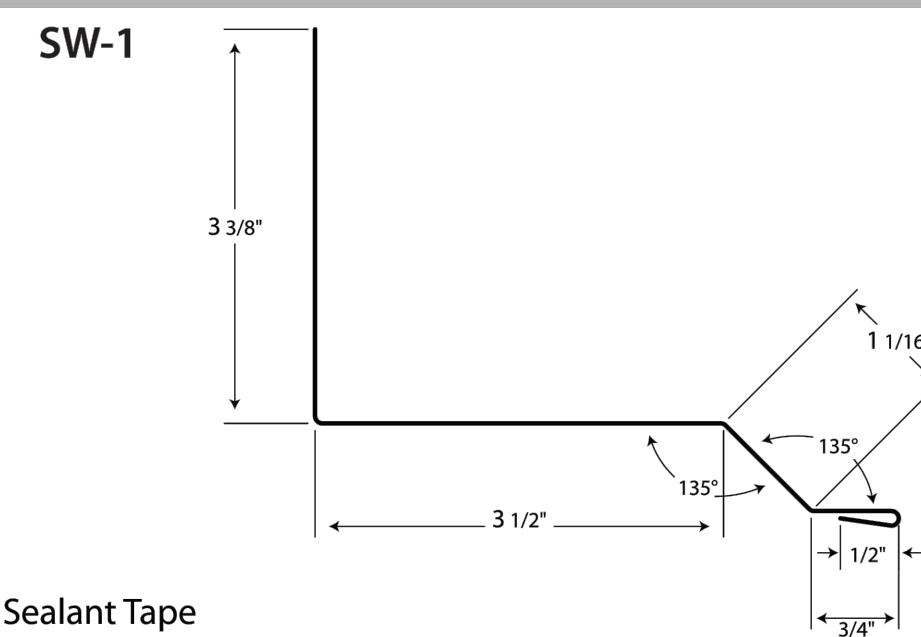
**Component Details**



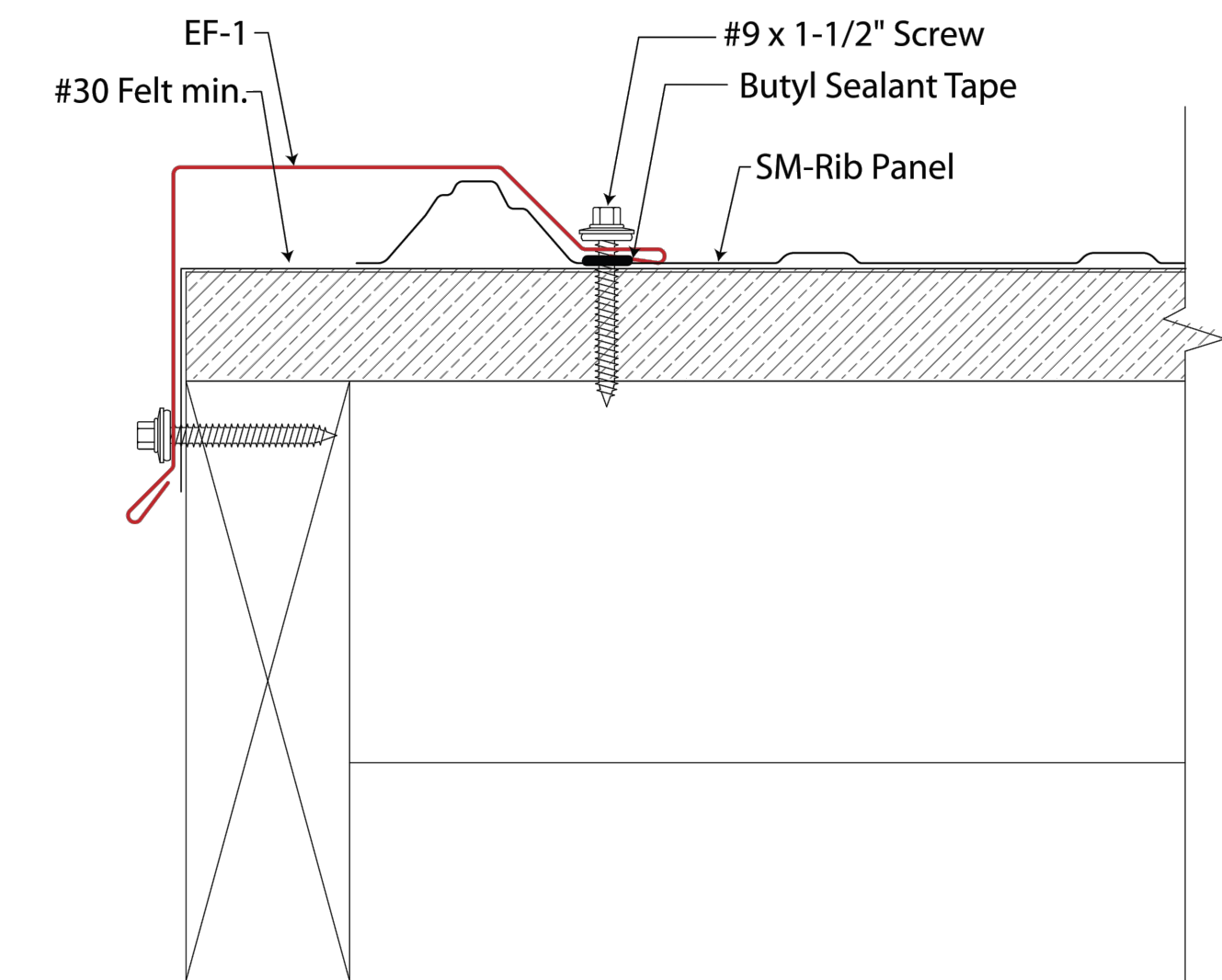
**Side Wall Flashing SW-1 (10' Lengths)**



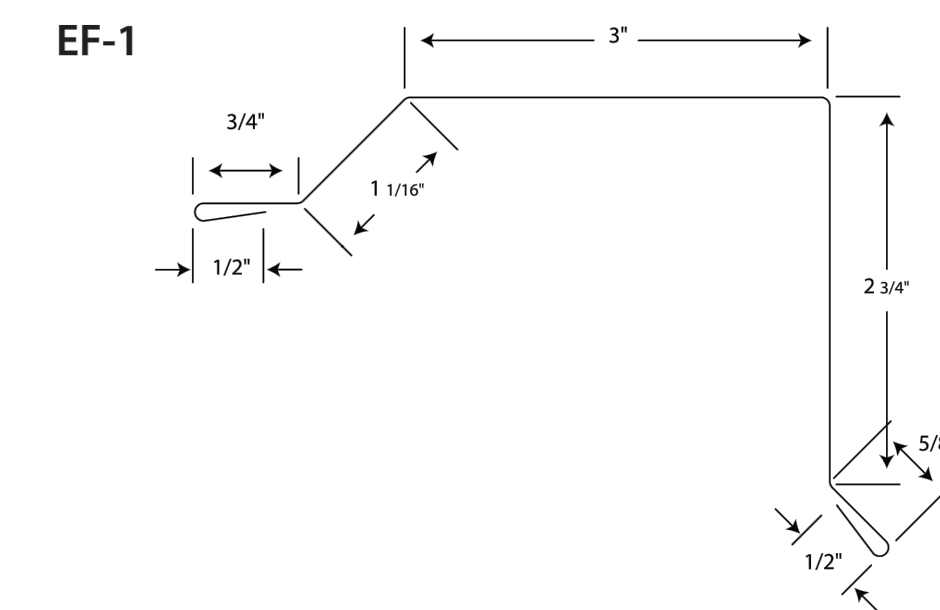
**Component Details**



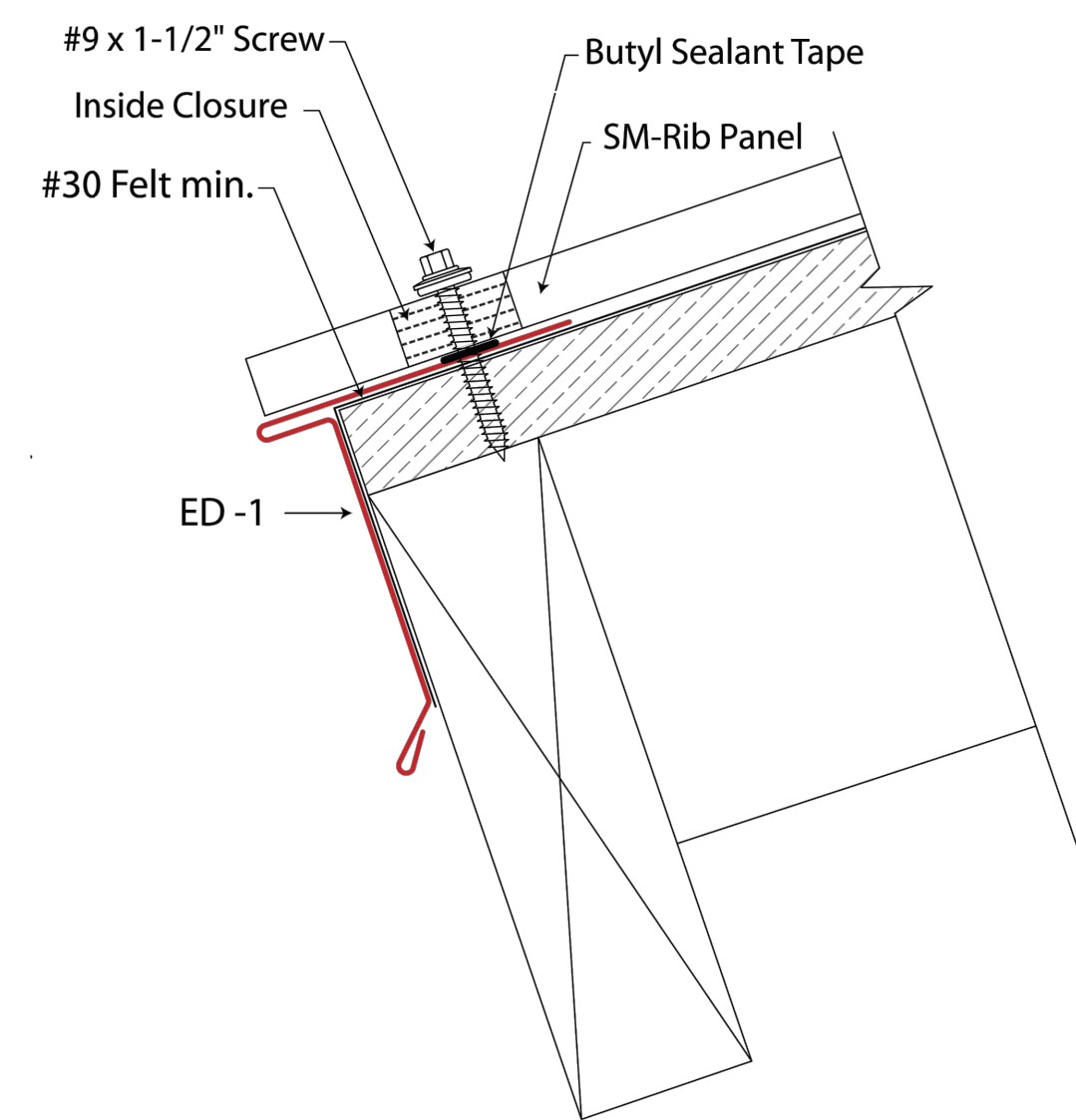
**Gable Rake EF-1 (10' Lengths)**



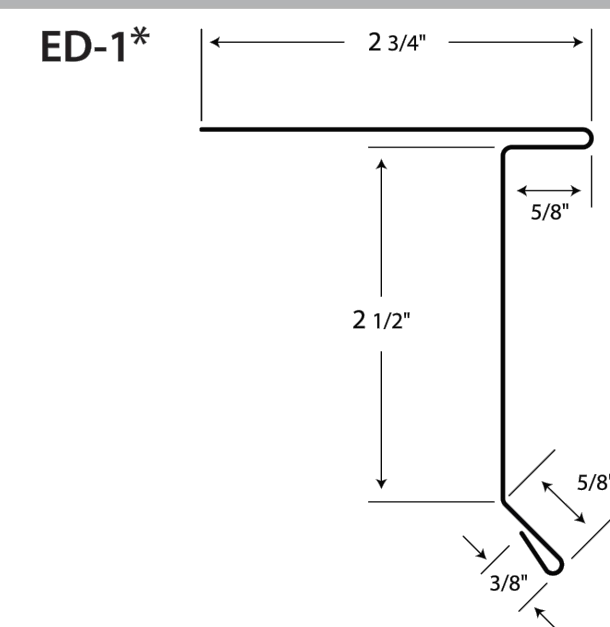
**Component Details**



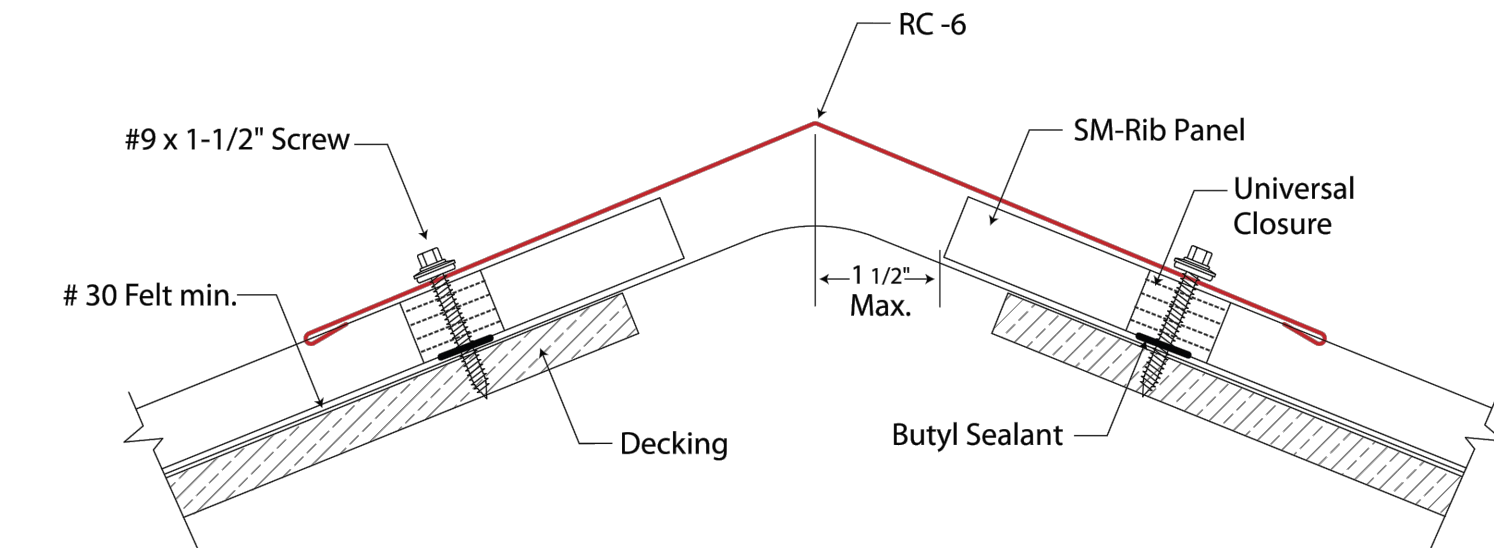
**Eave Drip ED-1 (10' Lengths)**



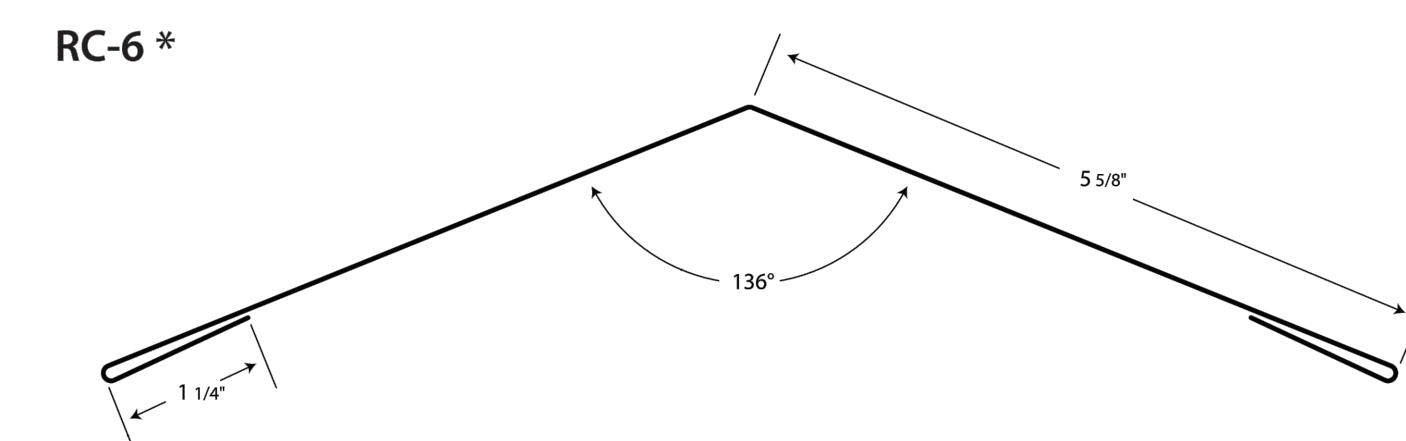
**Component Details**



**Hip Cap RC-6 (10' Lengths)**



**Component Details**



REVISIONS		
NO.	DATE	BY

DATE:	1-5-21
SCALE:	SHOWN
DESIGNED BY:	A.E.S.
DRAWN BY:	M.A.S.
CHECKED BY:	A.E.S.
FILE NO:	PCB STORAGE BUILDING-Copy.dwg

CITY OF  
PANAMA CITY BEACH

116 SOUTH ARNOLD ROAD  
PANAMA CITY BEACH, FLORIDA 32413

SEAL

PCBPD  
IMPOUND BUILDING

ROOF DETAILS & ROOF PLAN

SHEET NUMBER	4 OF 4
PROJECT NUMBER	