

RESOLUTION 20-171

A RESOLUTION OF THE CITY OF PANAMA CITY BEACH, FLORIDA, AUTHORIZING THE PURCHASE OF ONE CHEVROLET SILVERADO WORK TRUCK FROM GARBER CHEVROLET BUICK GMC, INC., IN THE TOTAL AMOUNT OF \$26,228.40; AND PROVIDING AN IMMEDIATELY EFFECTIVE DATE.

BE IT RESOLVED by the City Council of the City of Panama City Beach that the appropriate officers of the City are authorized to execute and deliver on behalf of the City that certain Agreement between the City and Garber Chevrolet Buick GMC, Inc., relating to the purchase of one Chevrolet Silverado 1500 4WD Double Cab 147" Work Truck, for a total amount of Twenty Six Thousand, Two Hundred Twenty Eight Dollars and Forty Cents (\$26,228.40) on substantially the terms and conditions of the quote attached and presented to the Council today, with such changes, insertions or omissions as may be approved by the City Manager and whose execution shall be conclusive evidence of such approval.

THIS RESOLUTION shall be effective immediately upon passage.

PASSED in regular session this 10th day of September, 2020.

CITY OF PANAMA CITY BEACH

By: _____

MSH
Mark Sheldon, Mayor

ATTEST:

Lynne Fasone
Lynne Fasone, City Clerk



Panama City Beach Fire Rescue

UNSPSC Code	29101507
Line #	137
Unit Description	CR10753

Prepared for:

Prepared by:

8/6/2020
Panama City Beach Fire Rescue
Beach Rescue Fire Truck
RFP# 082020 PCBFD

Garber Chevrolet Buick GMC
Ryan Davis
1904) 264-2442 ext 2350 FAX (904) 284-0054
3340 Hwy 17 Green Cove Springs, FL 32043
rdavis@garberautomall.com



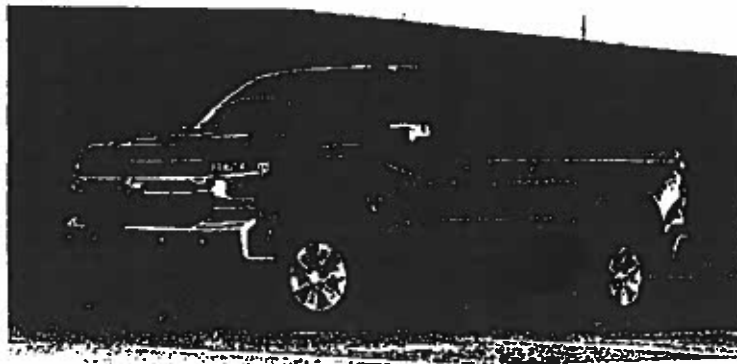
DEPARTMENT OF MANAGEMENT
SERVICES

Prices are published by the State of Florida Department of Management Services
https://www.dms.myflorida.com/business_operations/state_purchasing/state_contracts_and_agreements
Purchasing contract number is 25100000-19-1, expiring November 16, 2020 for Motor Vehicles. If you have any questions regarding this quote please call!

Codes	Optional Equipment	Unit Price	CEM Discount	Net Price
2021	2020 Chevrolet Silverado 1500 4WD Double Cab 147" Work Truck			\$23,376.00
2021	Carryover Pricing; 2021 Model at 2020 Contract Price	Included		\$0.00
1WT	Work Truck Preferred Equipment Group	Included		\$0.00
L82	Engine, 5.3L EcoTec3 V8	1395	(\$27.90)	\$1,367.10
MYC	Transmission, 6-speed automatic	Included		\$0.00
G7C	Red Hot	Included		\$0.00
H2G	Jet Black, Vinyl seat trim	Included		\$0.00
RD6	Wheels, 17" x 8" (43.2 cm x 20.3 cm) Ultra Silver painted steel	Included		\$0.00
QDV	Tires, 265/70R17 all-terrain, blackwall	200	(\$4.00)	\$196.00
GU6	Rear axle, 3.42 ratio	Included		\$0.00
G80	Differential, heavy-duty locking rear (Std in State Contract Specs)	Included		\$0.00
Z82	Trailer Package	395	(\$7.90)	\$387.10
ZLQ	WT Fleet Convenience Package includes (AQQ) Remote Keyless Entry, (Q75) EZ Lift power lock and release tailgate, (K34) cruise control, (DLF) power mirrors	695	(\$13.90)	\$681.10
STD	Power Windows and Door Locks	Included		\$0.00
N22	Skid Plates	150	(\$3.00)	\$147.00
VK3	License plate kit, front	N/C		\$0.00
SH1	Key equipment, two additional keys for single key system. Provides two additional spare keys for a total of (4). (Keys will be cut but not programmed)	45	(\$0.90)	\$44.10
PROG	Program (2) Additional Factory Provided Keys	30		\$30.00
HOOK	Recovery hooks, front, frame-mounted, black	Included		\$0.00
T&D	Temporary Tag and Delivery	Included		\$0.00
TOTAL PURCHASE AMOUNT PER VEHICLE				\$ 26,228.40



Vehicle: [Fleet] 2020 Chevrolet Silverado 1500 (CK10753) 4WD Double Cab 147" Work Truck





Vehicle: [Fleet] 2020 Chevrolet Silverado 1500 (CK10753) 4WD Double Cab 147" Work Truck (Complete)

Selected Model and Options

MODEL

CODE	MODEL	MSRP
CK10753	2020 Chevrolet Silverado 1500 4WD Double Cab 147" Work Truck	\$35,700.00

COLORS

CODE	DESCRIPTION	MSRP
G7C	Red Hot	\$0.00

EMISSIONS

CODE	DESCRIPTION	MSRP
FE9	Emissions, Federal requirements	\$0.00

ENGINE

CODE	DESCRIPTION	MSRP
L82	Engine, 5.3L EcoTec3 V8 with Active Fuel Management, (355 hp [265 kW] @ 5600 rpm, 383 lb-ft of torque [518 Nm] @ 4100 rpm)	\$1,395.00

TRANSMISSION

CODE	DESCRIPTION	MSRP
MYC	Transmission, 6-speed automatic, electronically controlled (STD)	\$0.00

GVWR

CODE	DESCRIPTION	MSRP
C5W	GVWR, 7000 lbs. (3175 kg) (STD) (Requires Crew Cab or Double Cab 4WD model and (LV3) 4.3L EcoTec3 V6 engine or (L3B) 2.7L Turbo engine. Requires Double Cab 4WD model and (L82) 5.3L EcoTec3 V8 engine.)	\$0.00

AXLE

CODE	DESCRIPTION	MSRP
GU6	Rear axle, 3.42 ratio	\$0.00

PREFERRED EQUIPMENT GROUP

CODE	DESCRIPTION	MSRP
1WT	Work Truck Preferred Equipment Group includes standard equipment	\$0.00

This document contains information considered Confidential between GM and its Clients uniquely. The information provided is not intended for public disclosure. Prices, specifications, and availability are subject to change without notice, and do not include certain fees, taxes and charges that may be required by law or vary by manufacturer or region. Performance figures are guidelines only, and actual performance may vary. Photos may not represent actual vehicles or exact configurations. Content based on report preparer's input is subject to the accuracy of the input provided.
 Data Version: 11572. Data Updated: Aug 5, 2020 11:03:00 PM PDT.



Vehicle: [Fleet] 2020 Chevrolet Silverado 1500 (CK10753) 4WD Double Cab 147" Work Truck (Complete)

WHEELS

CODE	DESCRIPTION	MSRP
RD6	Wheels, 17" x 8" (43.2 cm x 20.3 cm) Ultra Silver painted steel (STD)	\$0.00

TIRES

CODE	DESCRIPTION	MSRP
QDV	Tires, 265/70R17 all-terrain, blackwall	\$200.00

SPARE TIRE

CODE	DESCRIPTION	MSRP
XCQ	Tire, spare 265/70R17SL all-season, blackwall (Requires (QDV) 265/70R17 all-terrain blackwall tires or all 18" wheels and tires.)	Inc.

PAINT

CODE	DESCRIPTION	MSRP
G7C	Red Hot	\$0.00

SEAT TYPE

CODE	DESCRIPTION	MSRP
A52	Seats, front 40/20/40 split-bench (STD)	\$0.00

SEAT TRIM

CODE	DESCRIPTION	MSRP
H2G	Jet Black, Vinyl seat trim	\$0.00

RADIO

CODE	DESCRIPTION	MSRP
IOR	Audio system, Chevrolet Infotainment 3 system 7" diagonal color touchscreen, AM/FM stereo. Additional features for compatible phones include: Bluetooth audio streaming for 2 active devices, voice command pass-through to phone, Apple CarPlay and Android Auto capable. (STD)	\$0.00

This document contains information considered Confidential between GM and its Clients uniquely. The information provided is not intended for public disclosure. Prices, specifications, and availability are subject to change without notice, and do not include certain fees, taxes and charges that may be required by law or vary by manufacturer or region. Performance figures are guidelines only, and actual performance may vary. Photos may not represent actual vehicles or exact configurations. Content based on report preparer's input is subject to the accuracy of the input provided.
 Data Version: 11572. Data Updated: Aug 5, 2020 11:03:00 PM PDT.



Vehicle: [Fleet] 2020 Chevrolet Silverado 1500 (CK10753) 4WD Double Cab 147" Work Truck (Complete)

ADDITIONAL EQUIPMENT - PACKAGE

CODE	DESCRIPTION	MSRP
Z82	Trailer Package includes trailer hitch, 7-pin and 4-pin connectors and (CTT) Hitch Guidance (Included with (PEB) WT Value Package.)	\$395.00
ZLQ	WT Fleet Convenience Package includes (AQQ) Remote Keyless Entry, (QT5) EZ Lift power lock and release tailgate, (K34) cruise control, (DLF) power mirrors; (When ordered with (PQA) WT Safety Package, (DLF) power mirrors include (UKC) Lane Change Alert with Side Blind Zone Alert and (DP6) high-gloss mirror caps.	\$695.00

ADDITIONAL EQUIPMENT - MECHANICAL

CODE	DESCRIPTION	MSRP
	Battery, heavy-duty 720 cold-cranking amps/80 Amp-hr, maintenance-free with rundown protection and retained accessory power (Included and only available with (L82) 5.3L EcoTec3 V8 engine.)	Inc.
G80	Differential, heavy-duty locking rear (Included with (Z71) Z71 Off-Road Package.)	\$395.00
KNP	Cooling, auxiliary external transmission oil cooler (Included and only available with V8 engines.)	Inc.
NZZ	Skid Plates (Included with (BAQ) Work Truck Package, (Z71) Z71 Off-Road Package or (VYU) Snow Plow Prep Package.)	\$150.00

ADDITIONAL EQUIPMENT - EXTERIOR

CODE	DESCRIPTION	MSRP
DLF	Mirrors, outside heated power-adjustable (Included and only available with (PCV) WT Convenience Package or (ZLQ) WT Fleet Convenience Package. When (PQA) WT Safety Package is ordered, includes (DP6) high gloss Black mirror caps.)	Inc.
QT5	Tailgate, gate function manual with EZ Lift, includes power lock and release (Included and only available with (PCV) WT Convenience Package or (ZLQ) WT Fleet Convenience Package.)	Inc.
VK3	License plate kit, front	\$0.00

ADDITIONAL EQUIPMENT - INTERIOR

CODE	DESCRIPTION	MSRP
5H1	Key equipment, two additional keys for single key system. Provides two additional spare keys for a total of (4). (Keys will be cut but not programmed) (Requires (SAF) spare tire lock. Not available with SEO (5Z4) spare wheel, carrier and lock delete.)	\$45.00
AQQ	Remote Keyless Entry, with 2 transmitters (Included and only available with (PCV) WT Convenience Package or (ZLQ) WT Fleet Convenience Package.)	Inc.
K34	Cruise control, electronic with set and resume speed, steering wheel-mounted (Included with (PCV) WT Convenience Package or (ZLQ) WT Fleet Convenience Package.)	Inc.

This document contains information considered Confidential between GM and its Clients uniquely. The information provided is not intended for public disclosure. Prices, specifications, and availability are subject to change without notice, and do not include certain fees, taxes and charges that may be required by law or vary by manufacturer or region. Performance figures are guidelines only, and actual performance may vary. Photos may not represent actual vehicles or exact configurations. Content based on report preparer's input is subject to the accuracy of the input provided.
 Data Version: 11572. Data Updated: Aug 5, 2020 11:03:00 PM PDT.



Vehicle: [Fleet] 2020 Chevrolet Silverado 1500 (CK10753) 4WD Double Cab 147" Work Truck (Complete)

ADDITIONAL EQUIPMENT - SAFETY-INTERIOR

CODE	DESCRIPTION	MSRP
CTT	Hitch Guidance (Included and only available with (Z82) Trailering Package.)	Inc.
Options Total		\$3,275.00

Price Summary

PRICE SUMMARY

	MSRP
Base Price	\$35,700.00
Total Options	\$3,275.00
Vehicle Subtotal	\$38,975.00
Destination Charge	\$1,595.00
Grand Total	\$40,570.00

Standard Equipment

Mechanical

- Durabed, pickup bed
- Engine, 4.3L EcoTec3 V6 with Active Fuel Management, (285 hp [212 kW] @ 5300 rpm, 305 lb-ft of torque [413 Nm] @ 3900 rpm) (STD)
- Transmission, 6-speed automatic, electronically controlled (STD)
- Rear axle, 3.42 ratio
- GVWR, 7000 lbs. (3175 kg) (STD) (Requires Crew Cab or Double Cab 4WD model and (LV3) 4.3L EcoTec3 V6 engine or (L3B) 2.7L Turbo engine. Requires Double Cab 4WD model and (L82) 5.3L EcoTec3 V8 engine.)
- Transfer case, single speed electronic Autotrac with rotary dial control (4WD models only)
- Four wheel drive
- Cooling, external engine oil cooler (Not available with (L3B) 2.7L Turbo engine.)
- Battery, heavy-duty 730 cold-cranking amps/70 Amp-hr, maintenance-free with rundown protection and retained accessory power (Included and only available with (LV3) 4.3L EcoTec3 V6 engine.)
- Alternator, 170 amps
- Frame, fully-boxed, hydroformed front section
- Steering, Electric Power Steering (EPS) assist, rack-and-pinion
- Brakes, 4-wheel antilock, 4-wheel disc with DURALIFE rotors
- Brake lining wear indicator

This document contains information considered Confidential between GM and its Clients uniquely. The information provided is not intended for public disclosure. Prices, specifications, and availability are subject to change without notice, and do not include certain fees, taxes and charges that may be required by law or vary by manufacturer or region. Performance figures are guidelines only, and actual performance may vary. Photos may not represent actual vehicles or exact configurations. Content based on report preparer's input is subject to the accuracy of the input provided.
 Data Version: 11572 Data Updated: Aug 5, 2020 11:03:00 PM PDT



Vehicle: [Fleet] 2020 Chevrolet Silverado 1500 (CK10753) 4WD Double Cab 147" Work Truck (Complete)

Mechanical

Capless Fuel Fill

Exhaust, single outlet

Exterior

Wheels, 17" x 8" (43.2 cm x 20.3 cm) Ultra Silver painted steel (STD)

Tires, 255/70R17 all-season, blackwall (STD)

Tire, spare 255/70R17 all-season, blackwall (STD) (Included with (QBN) 255/70R17 all-season, blackwall tires)

Tire carrier lock, keyed cylinder lock that utilizes same key as Ignition and door

Bumpers, front, Black (semi-gloss)

Bumpers, rear, Black (semi-gloss)

CornerStep, rear bumper

Recovery hooks, front, frame-mounted, black (Included with 4WD models or on 2WD models with (PQA) WT Safety Package. Available free flow on 2WD models.)

Cargo tie downs (12), fixed rated at 500 lbs per corner

Grille (Black bars and mesh inserts.)

Headlamps, halogen reflector with halogen Daytime Running Lamps

Lamps, cargo area, cab mounted integrated with center high mount stop lamp, with switch in bank on left side of steering wheel

Taillamps, with incandescent tail, stop and reverse lights

Mirrors, outside manual, Black

Glass, solar absorbing, tinted

Door handles, Black

Tailgate and bed rail protection cap, top

Tailgate, locking utilizes same key as ignition and door (Upgraded to (QT5) EZ Lift power lock and release tailgate when (ZLO) WT Fleet Convenience Package or (PCV) WT Convenience Package is ordered.)

Tailgate, gate function manual, no EZ Lift

Entertainment

Audio system, Chevrolet Infotainment 3 system 7" diagonal color touchscreen, AM/FM stereo. Additional features for compatible phones include: Bluetooth audio streaming for 2 active devices, voice command pass-through to phone, Apple CarPlay and Android Auto capable. (STD)

Audio system feature, 6-speaker system (Requires Crew Cab or Double Cab model.)

Bluetooth for phone, connectivity to vehicle infotainment system

This document contains information considered Confidential between GM and its Clients uniquely. The information provided is not intended for public disclosure. Prices, specifications, and availability are subject to change without notice, and do not include certain fees, taxes and charges that may be required by law or vary by manufacturer or region. Performance figures are guidelines only, and actual performance may vary. Photos may not represent actual vehicles or exact configurations. Content based on report preparer's input is subject to the accuracy of the input provided.

Data Version: 11572. Data Updated: Aug 5, 2020 11:03:00 PM PDT.



Vehicle: [Fleet] 2020 Chevrolet Silverado 1500 (CK10753) 4WD Double Cab 147" Work Truck (Complete)

Interior

Seats, front 40/20/40 split-bench (STD)

Seat trim, Vinyl

Seat adjuster, driver 4-way manual

Seat adjuster, passenger 4-way manual

Seat, rear 60/40 folding bench (folds up), 3-passenger (includes child seat top tether anchor) (Requires Crew Cab or Double Cab model.)

Floor covering, rubberized-vinyl (Not available with LPO floor liners.)

Steering wheel, urethane

Steering column, Tilt-Wheel, manual with wheel locking security feature

Instrument cluster, 6-gauge cluster featuring speedometer, fuel level, engine temperature, tachometer, voltage and oil pressure

Driver Information Center, 3.5" diagonal monochromatic display

Exterior Temperature Display located in radio display

Rear Seat Reminder (Requires Crew Cab or Double Cab model.)

Window, power front, drivers express up/down (Standard on Crew Cab and Double Cab models.)

Window, power front, passenger express down (Standard on Crew Cab and Double Cab models.)

Windows, power rear, express down (Not available with Regular Cab models.)

Door locks, power (Standard on Crew Cab and Double Cab models.)

Power outlet, front auxiliary, 12-volt

USB port, located on instrument panel

Air conditioning, single-zone

Air vents, rear, heating/cooling (Not available on Regular Cab models.)

Mirror, inside rearview, manual tilt

Assist handles front A-pillar mounted for driver and passenger, rear B-pillar mounted

Safety-Mechanical

StabiliTrak, stability control system with Proactive Roll Avoidance and traction control, includes electronic trailer sway control and hill start assist

Safety-Exterior

Daytime Running Lamps with automatic exterior lamp control

This document contains information considered Confidential between GM and its Clients uniquely. The information provided is not intended for public disclosure. Prices, specifications, and availability are subject to change without notice, and do not include certain fees, taxes and charges that may be required by law or vary by manufacturer or region. Performance figures are guidelines only, and actual performance may vary. Photos may not represent actual vehicles or exact configurations. Content based on report preparer's input is subject to the accuracy of the input provided.

Data Version: 11572 Data Updated Aug 5, 2020 11:03:00 PM PDT.



Vehicle: [Fleet] 2020 Chevrolet Silverado 1500 (CK10753) 4WD Double Cab 147" Work Truck (Complete)

Safety-Interior

Airbags, dual-stage frontal airbags for driver and front outboard passenger; Seat-mounted side-impact airbags for driver and front outboard passenger; Head-curtain airbags for front and rear outboard seating positions; Includes front outboard Passenger Sensing System for frontal outboard passenger airbag (Always use seat belts and child restraints. Children are safer when properly secured in a rear seat in the appropriate child restraint. See the Owner's Manual for more information.)

Rear Vision Camera

Teen Driver a configurable feature that lets you activate customizable vehicle settings associated with a key fob, to help encourage safe driving behavior. It can limit certain available vehicle features, and it prevents certain safety systems from being turned off. An in-vehicle report card gives you information on driving habits and helps you to continue to coach your new driver

Tire Pressure Monitoring System with Tire Fill Alert (does not apply to spare tire)

WARRANTY

Warranty Note: <<< Preliminary 2020 Warranty Note >>>

Basic Years: 3

Basic Miles/km: 36,000

Drivetrain Years: 5

Drivetrain Miles/km: 60,000

Drivetrain Note: HD Duramax Diesel: 5 Years/100,000 Miles; Qualified Fleet Purchases: 5 Years/100,000 Miles

Corrosion Years (Rust-Through): 6

Corrosion Years: 3

Corrosion Miles/km (Rust-Through): 100,000

Corrosion Miles/km: 36,000

Roadside Assistance Years: 5

Roadside Assistance Miles/km: 60,000

Roadside Assistance Note: HD Duramax Diesel: 5 Years/100,000 Miles; Qualified Fleet Purchases: 5 Years/100,000 Miles

Maintenance Note: 1 Year/1 Visit

This document contains information considered Confidential between GM and its Clients uniquely. The information provided is not intended for public disclosure. Prices, specifications, and availability are subject to change without notice, and do not include certain fees, taxes and charges that may be required by law or vary by manufacturer or region. Performance figures are guidelines only, and actual performance may vary. Photos may not represent actual vehicles or exact configurations. Content based on report preparer's input is subject to the accuracy of the input provided.
Data Version: 11572. Data Updated: Aug 5, 2020 11:03:00 PM PDT.