

RESOLUTION 21-35

A RESOLUTION OF THE CITY OF PANAMA CITY BEACH, APPROVING AN AGREEMENT WITH DIVEBASE INTERNATIONAL, INC, FOR THE PURCHASE OF A SCBA AIR COMPRESSOR, FILL STATION AND STORAGE SYSTEM IN THE TOTAL AMOUNT OF \$73,403.10.

BE IT RESOLVED by the City of Panama City Beach, Florida that the appropriate officer of the City are authorized to execute and deliver on behalf of the City that certain Agreement between the City and Divebase International, Inc., d/b/a Compressed Air Engineering relating to the purchase of a SCBA air compressor, fill station and storage system in the total amount of Seventy Three Thousand, Four Hundred Three Dollars and Ten Cents (\$73,403.10), in substantially the form attached as Exhibit A and presented to the Council today, with such changes, insertions, or omissions as may be approved by the City Manager and whose execution of such Agreement shall be conclusive evidence of such approval.

THIS RESOLUTION shall be effective immediately upon passage.

PASSED in regular session this 12th day of November, 2020.

CITY OF PANAMA CITY BEACH

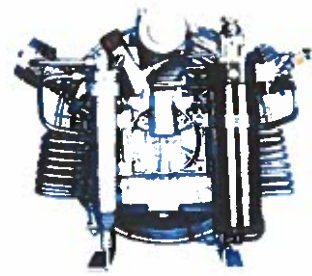
By: 

Mark Sheldon, Mayor

ATTEST:


Lynne Fasone, City Clerk

Divebase International, Incorporated
dba: Compressed Air Engineering
 61 First Street
 Mexico Beach, FL 32456
 (850) 819-4112
 mexbchdive@aol.com



Quote

ADDRESS	SHIP TO	QUOTE # 2672 PCBF Uni
Panama City Beach Fire	Panama City Beach Fire	4S18 RP
PCB Fire	PCB Fire	DATE 08/16/2020
17121 Panama City	17121 Panama City	EXPIRATION 10/01/2020
Beach Parkway	Beach Parkway	DATE
Panama City Beach,	Panama City Beach,	
Florida	Florida	
32413 850-233-5120	32413 850-233-5120	

ACTIVITY	QTY	RATE	AMOUNT
036807-00			
Parts - Compressor	1	79,295.00	79,295.00
Parts - Compressor: TO BE DETERMINED PLACE HOLDER UNICUS 4S CF3			

Item Master to act as a place holder on Sales Orders until the proper Item Master Filename / BOM is done.

COMPRESSOR MODEL: UNICUS 4S;
 MODEL NUMBER: U4S 18H - IK 15.11 II BLOCK;

PURIFICATION: P5 SECURUS;
 ACD TYPE: B- DRAIN;
 PHASE: THREE PHASE;
 VOLTAGE: 230V-60HZ;
 STORAGE: 4 ASME (ADDER OPTION);
 MONITOR TYPE: CO MONITOR (ADDER OPTION);
 PANEL TYPE: 100' HOSE REEL (ADDER OPTION);
 PANEL TYPE: REMOTE FILL (IN ADDITION TO PANEL TYPE, ADDER OPTION);
 FILL WHIPS: * QD IS STANDARD,

ACTIVITY	QTY	RATE	AMOUNT
----------	-----	------	--------

WHIPS MUST BE ON SEPARATE LINE ITEM.
 PARTS TO BE SHIPPED WITH UNIT:
 MOUNTING FEET: QTY 4
 PURIFICATION WRENCH: QTY 1
 PURIFICATION CARTRIDGE: 060037A, QTY 1
 PURIFICATION CARTRIDGE: 058825A, QTY 1
 VALVE WRENCH: 082048, QTY 1
 FINAL: 6000
 RESTART: 5600
 RELIEF: 6500
 Delivery: 6-8 BUSINESS WEEKS AFTER RECEIVE YOUR WRITTEN PURCHASE ORDER WITH 25% DEPOSIT AS ADVANCED PAYMENT TO START PRODUCTION (ORDER SURPASS \$75K!)

Parts - Compressor Parts - Compressor: Included;	3	0.00	0.00
------------------------------------------------------------	---	------	------

CFSII/FILL/H-SS/QD/W-R

U/M EA
 QD FILL WHIP CF3
 FILL PRESSURE: 4500 PSIG
Parts - Compressor
 Parts - Compressor: Included;
 FILL WHIP TYPE: HIGH FILL SS ADP w/ RLF
 * QUICK DISCONNECT
 *ALL FILL WHIPS COME ASSEMBLED WITH 14IN HOSE AND ADAPTERS.
 Delivery: WITH CFS55-3S

S+H Shipping and Handling Charge: FREIGHT	1	1,264.00	1,264.00
--------------------------------------------------------	---	----------	----------

EA
 FREIGHT/SHIPPING
 PENDING
 Delivery: FROM PLANT TO MEXICO BEACH, FL 32444

Labor - Compressor Sales Labor - Compressor Sales:	1	1,000.00	1,000.00
--------------------------------------------------------------	---	----------	----------

Unit is to be placed in position by the city and have the proper electrical voltage and power supplied to the unit.

DO NOT START THE UNIT.

We will initiate the start-up of the unit and connect the necessary high pressure hoses, fittings, filters, and other start-up requirements.

ACTIVITY	QTY	RATE	AMOUNT
After the start-up is completed, we will test run the unit.			
After passing all the test run requirements we will validate the warranty for the unit.			
At this time, or at a time of your desire, we will hold a training session for your compressor operators.			
If we have to come back a a later time for initial training of your personnel, there will be no additional charge.			

SUBTOTAL	81,559.00
DISCOUNT 10%	-8,155.90
TOTAL	\$73,403.10

Accepted By

Accepted Date