

RESOLUTION 20-123

A RESOLUTION OF THE CITY OF PANAMA CITY BEACH, FLORIDA, ESTABLISHING A RESIDENTIAL PARKING PILOT PROGRAM; CONFIRMING THE DESIGNATION OF RESIDENTIAL PARKING AREAS IN THE CITY'S THREE PAY TO PARK LOTS; PROVIDING FOR THE ISSUANCE OF DECALS; AUTHORIZING THE CITY MANAGER TO ERECT SIGNAGE; AND PROVIDING AN EFFECTIVE DATE.

BE IT RESOLVED BY THE CITY COUNCIL THAT:

1. A Residential Parking Pilot Program is hereby initiated, effective June 15, 2020, to set aside a portion of parking spaces in City pay to park parking lots for the exclusive use of residents. The pilot program will automatically terminate on February 28, 2022, unless affirmatively extended or earlier terminated by the Council.
2. Residential parking areas shall be established for motor vehicles in the lots described in Exhibit A. The residential parking areas shall represent approximately 25% of the capacity of the lots described.
3. During the pilot program, 175 decals shall be made available each year to City residents desiring to access the Residential parking areas on a first-come, first-served basis. Each household in the City is eligible to participate in the residential parking program. A decal shall be issued once the resident has completed the Residential Parking Decal application, provided the required documentation, and paid the application fee.
4. Decals for 2020-2021 will be made available to the public on June 15, 2020 and will be valid until February 28, 2021. Decals for 2021-2022 will be available to the public on March 1, 2021 and will be valid until February 28, 2022. The application fee for a residential parking decal shall be Thirty Dollars (\$30.00).
5. A residential parking decal shall not guarantee or reserve to the holder a parking space within a designated residential parking area. A residential parking decal shall not authorize the holder of the decal to park in spaces or areas designated by law as restricted or prohibited parking (loading zones, fire hydrants, disabled, or other such regulated

areas), nor shall it exempt him from the obligation to pay for parking in the designated parking areas. While a residential parking decal will gain a resident the ability to potentially park in a designated parking area, the failure to obtain a permit will not prevent a resident from parking in any unrestricted parking space in a City pay to park lot.

6. The City Manager is authorized and directed to erect the appropriate signs and markings in the designated parking areas. Unless determined otherwise by the City Manager, the residential parking area shall be available all hours of the day, seven days a week.

THIS RESOLUTION shall be effective immediately upon passage.

PASSED in regular session this 11th day of June, 2020.

CITY OF PANAMA CITY BEACH

By: 
Mark Sheldon, Mayor

ATTEST:


Jo Smith, Interim City Clerk

PANAMA CITY BEACH FRONT BEACH ROAD CRA PARKING

- 96 PARKING SPACE
- 15 TRUCK/TRAILER/RV SPACES
- 24 RESERVED FOR PCB RESIDENTS
- RATES
 - \$1 PER HOUR
 - \$6 PER DAY
 - \$42 PER WEEK



THOMAS DRIVE PARKING LOT
AT RIPLEY'S

PANAMA CITY BEACH FRONT BEACH ROAD CRA PARKING

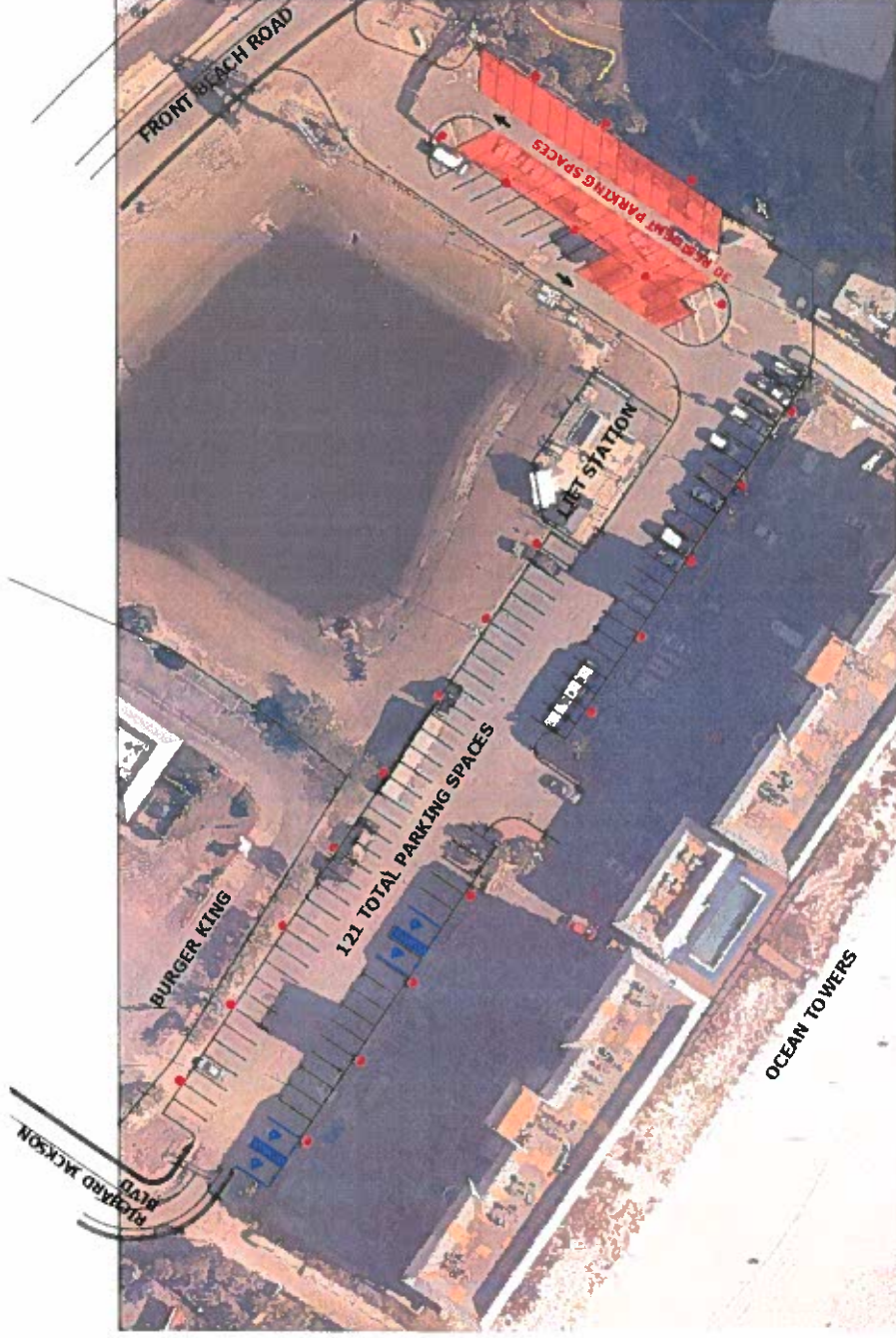
- 127 PARKING SPACE
- 32 SPACES RESERVED FOR LOCAL RESIDENTS (RED)
- RATES
\$1 PER HOUR
\$6 PER DAY



CHURCHWELL DRIVE PARKING LOT

PANAMA CITY BEACH FRONT BEACH ROAD CRA PARKING

- 121 PARKING SPACE
- 30 SPACES RESERVED FOR LOCAL RESIDENTS (RED)
- RATES
\$1 PER HOUR
\$6 PER DAY



RICHARD JACKSON BLVD
PARKING LOT